

## Product datasheet for **AP54569PU-N**

### WNT6 (Center) Rabbit Polyclonal Antibody

#### Product data:

Product Type:	Primary Antibodies
Applications:	WB
Recommended Dilution:	ELISA: 1:1;000. Western blot: 1:100~500.
Reactivity:	Human
Host:	Rabbit
Isotype:	Ig
Clonality:	Polyclonal
Immunogen:	KLH conjugated synthetic peptide between 172-201 amino acids from the Central region of human WNT6
Specificity:	This antibody detects WNT6 (Center).
Formulation:	PBS with 0.09% (W/V) sodium azide State: Aff - Purified State: Liquid Ig fraction
Concentration:	lot specific
Purification:	Protein A column followed by peptide affinity purification
Conjugation:	Unconjugated
Storage:	Store at 2 - 8 °C for up to six months or (in aliquots) at -20 °C for longer. Avoid repeated freezing and thawing.
Stability:	Shelf life: one year from despatch.
Gene Name:	Wnt family member 6
Database Link:	<a href="#">Entrez Gene 7475 Human Q9Y6F9</a>



[View online »](#)

**Background:**

The WNT gene family consists of structurally related genes which encode secreted signaling proteins. These proteins have been implicated in oncogenesis and in several developmental processes, including regulation of cell fate and patterning during embryogenesis. This gene is a member of the WNT gene family. It is overexpressed in cervical cancer cell line and strongly coexpressed with another family member, WNT10A, in colorectal cancer cell line. The gene overexpression may play key roles in carcinogenesis. This gene and the WNT10A gene are clustered in the chromosome 2q35 region. The protein encoded by this gene is 97% identical to the mouse Wnt6 protein at the amino acid level.

**Synonyms:**

Protein Wnt-6

**Note:**

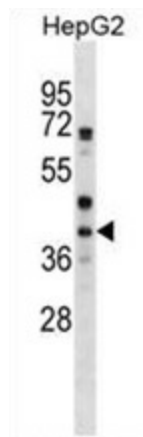
**Molecular Weight:** 39721 Da

**Protein Families:**

Adult stem cells, Cancer stem cells, ES Cell Differentiation/IPS, Secreted Protein, Stem cell relevant signaling - Wnt Signaling pathway, Transmembrane

**Protein Pathways:**

Basal cell carcinoma, Hedgehog signaling pathway, Melanogenesis, Pathways in cancer, Wnt signaling pathway

**Product images:**

WNT6 Antibody (Center) western blot analysis in HepG2 cell line lysates (35 ug/lane). This demonstrates the WNT6 antibody detected the WNT6 protein (arrow).