

Product datasheet for **AP54567PU-N**

WIPI2 (C-term) Rabbit Polyclonal Antibody

Product data:

Product Type:	Primary Antibodies
Applications:	WB
Recommended Dilution:	ELISA: 1:1;000. Western blot: 1:100~500.
Reactivity:	Human, Mouse
Host:	Rabbit
Isotype:	Ig
Clonality:	Polyclonal
Immunogen:	KLH conjugated synthetic peptide between 422~451 amino acids from the C-terminal region of human WIPI2
Specificity:	This antibody detects WIPI-2 (C-term).
Formulation:	PBS with 0.09% (W/V) sodium azide State: Aff - Purified State: Liquid Ig fraction
Concentration:	lot specific
Purification:	Protein A column followed by peptide affinity purification
Conjugation:	Unconjugated
Storage:	Store at 2 - 8 °C for up to six months or (in aliquots) at -20 °C for longer. Avoid repeated freezing and thawing.
Stability:	Shelf life: one year from despatch.
Gene Name:	WD repeat domain, phosphoinositide interacting 2
Database Link:	Entrez Gene 74781 Mouse Entrez Gene 26100 Human Q9Y4P8



[View online »](#)

Background:

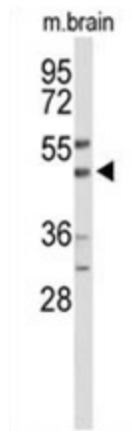
WD40 repeat proteins are key components of many essential biologic functions. They regulate the assembly of multiprotein complexes by presenting a beta-propeller platform for simultaneous and reversible protein-protein interactions. Members of the WIPI subfamily of WD40 repeat proteins, such as WIPI2, have a 7-bladed propeller structure and contain a conserved motif for interaction with phospholipids (Proikas-Cezanne et al., 2004 [PubMed 15602573]).

Synonyms:

WIPI2, CGI-50

Note:

Molecular Weight: 49408 Da

Product images:

Western blot analysis of WIPI2 Antibody (C-term) in mouse brain tissue lysates (35 ug/lane). WIPI2 (arrow) was detected using the purified Pab.