

Product datasheet for **AP54566PU-N**

WIPF2 (C-term) Rabbit Polyclonal Antibody

Product data:

Product Type:	Primary Antibodies
Applications:	IHC, WB
Recommended Dilution:	ELISA: 1:1;000. Western blot: 1:100~500. Immunohistochemistry on paraffin sections: 1:50~100.
Reactivity:	Human
Host:	Rabbit
Isotype:	Ig
Clonality:	Polyclonal
Immunogen:	KLH conjugated synthetic peptide between 392-419 amino acids from the C-terminal region of human WIPF2
Specificity:	This antibody detects WIPF2 (C-term).
Formulation:	PBS with 0.09% (W/V) sodium azide State: Aff - Purified State: Liquid Ig fraction
Concentration:	lot specific
Purification:	Protein A column followed by peptide affinity purification
Conjugation:	Unconjugated
Storage:	Store at 2 - 8 °C for up to six months or (in aliquots) at -20 °C for longer. Avoid repeated freezing and thawing.
Stability:	Shelf life: one year from despatch.
Gene Name:	WAS/WASL interacting protein family member 2
Database Link:	Entrez Gene 147179 Human Q8TF74
Background:	This gene encodes a WASP interacting protein (WIP)-related protein. It has been shown that this protein has a role in the WASP-mediated organization of the actin cytoskeleton and that this protein is a potential link between the activated platelet-derived growth factor receptor and the actin polymerization machinery.

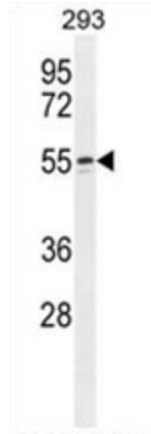

[View online »](#)

Synonyms: WICH, WIRE, WIP-related protein

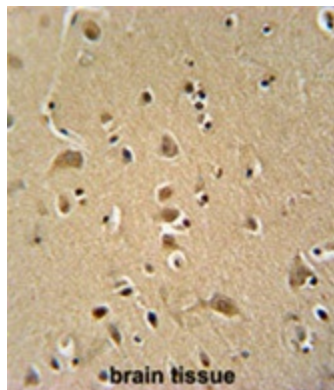
Note: **Molecular Weight:** 46289 Da

Protein Families: Druggable Genome

Product images:



WIPF2 antibody (C-term) immunohistochemistry analysis in formalin fixed and paraffin embedded human brain tissue followed by peroxidase conjugation of the secondary antibody and DAB staining. This data demonstrates the use of the WIPF2 antibody (C-term) for immunohistochemistry. Clinical relevance has not been evaluated.



WIPF2 antibody (C-term) immunohistochemistry analysis in formalin fixed and paraffin embedded human brain tissue followed by peroxidase conjugation of the secondary antibody and DAB staining. This data demonstrates the use of the WIPF2 antibody (C-term) for immunohistochemistry. Clinical relevance has not been evaluated.