

Product datasheet for **AP54563PU-N**

NSD3 (WHSC1L1) (N-term) Rabbit Polyclonal Antibody

Product data:

Product Type:	Primary Antibodies
Applications:	WB
Recommended Dilution:	ELISA: 1:1;000. Western blot: 1:50~100.
Reactivity:	Human
Host:	Rabbit
Isotype:	Ig
Clonality:	Polyclonal
Immunogen:	KLH conjugated synthetic peptide between 195-225 amino acids from the N-terminal region of human WHSC1L1
Specificity:	This antibody detects WHSC1L1 / NSD3 (N-term).
Formulation:	PBS with 0.09% (W/V) sodium azide State: Purified State: Liquid Ig fraction
Concentration:	lot specific
Purification:	Saturated Ammonium Sulfate (SAS) precipitation followed by dialysis against PBS
Conjugation:	Unconjugated
Storage:	Store at 2 - 8 °C for up to six months or (in aliquots) at -20 °C for longer. Avoid repeated freezing and thawing.
Stability:	Shelf life: one year from despatch.
Gene Name:	Wolf-Hirschhorn syndrome candidate 1-like 1
Database Link:	Entrez Gene 54904 Human Q9BZ95
Background:	This gene is related to the Wolf-Hirschhorn syndrome candidate-1 gene and encodes a protein with PWWP (proline-tryptophan-tryptophan-proline) domains. The function of the protein has not been determined. Two alternatively spliced variants have been described.
Synonyms:	Wolf-Hirschhorn syndrome candidate 1-like protein 1, Whistle, DC28



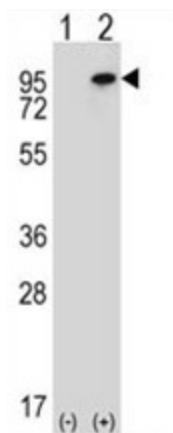
[View online »](#)

Note: **Molecular Weight:** 72;621 Isoform 3. 161613 Da

Protein Families: Druggable Genome, Transcription Factors

Protein Pathways: Lysine degradation

Product images:



Western blot analysis of WHSC1L1 (arrow) using rabbit polyclonal WHSC1L1 Antibody (N-term). 293 cell lysates (2 ug/lane) either nontransfected (Lane 1) or transiently transfected (Lane 2) with the WHSC1L1 gene.