

Product datasheet for **AP54561PU-N**

WFDC12 (C-term) Rabbit Polyclonal Antibody

Product data:

Product Type:	Primary Antibodies
Applications:	FC, IHC, WB
Recommended Dilution:	ELISA: 1:1;000. Western blot: 1:100~500. Immunohistochemistry on paraffin sections: 1:50~100. Flow cytometry: 1:10~50.
Reactivity:	Human
Host:	Rabbit
Isotype:	Ig
Clonality:	Polyclonal
Immunogen:	KLH conjugated synthetic peptide between 73-102 amino acids from the C-terminal region of human WFDC12
Specificity:	This antibody detects WFDC12 / WAP2 (C-term).
Formulation:	PBS with 0.09% (W/V) sodium azide State: Aff - Purified State: Liquid Ig fraction
Concentration:	lot specific
Purification:	Protein A column followed by peptide affinity purification
Conjugation:	Unconjugated
Storage:	Store at 2 - 8 °C for up to six months or (in aliquots) at -20 °C for longer. Avoid repeated freezing and thawing.
Stability:	Shelf life: one year from despatch.
Gene Name:	WAP four-disulfide core domain 12
Database Link:	Entrez Gene 128488 Human Q8WWY7



[View online »](#)

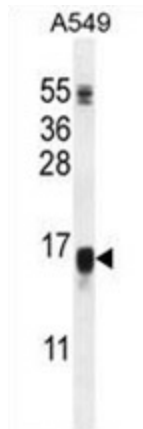
Background: This gene encodes a member of the WAP-type four-disulfide core (WFDC) domain family. The WFDC domain, or WAP signature motif, contains eight cysteines forming four disulfide bonds at the core of the protein, and functions as a protease inhibitor. Most WFDC gene members are localized to chromosome 20q12-q13 in two clusters: centromeric and telomeric. This gene belongs to the centromeric cluster.

Synonyms: C20orf122, UNQ544/PRO844

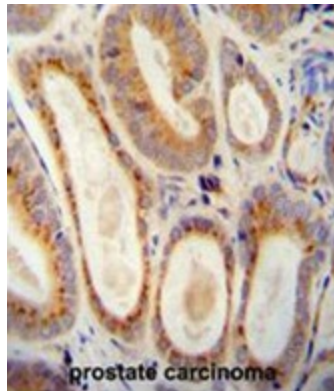
Note: **Molecular Weight:** 12050 Da

Protein Families: Secreted Protein

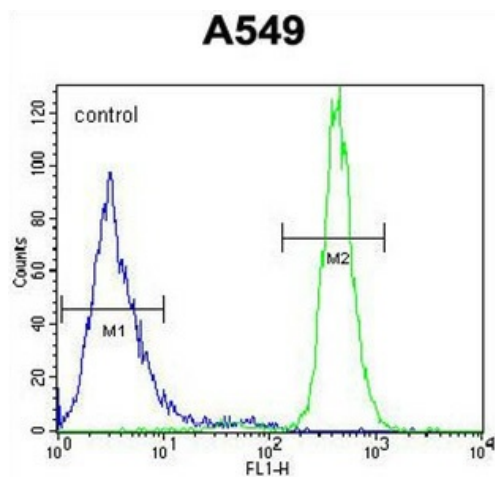
Product images:



WFDC12 Antibody (C-term) western blot analysis in A549 cell line lysates (35 ug/lane). This demonstrates the WFDC12 antibody detected the WFDC12 protein (arrow).



WFDC12 antibody (C-term) immunohistochemistry analysis in formalin fixed and paraffin embedded human prostate carcinoma followed by peroxidase conjugation of the secondary antibody and DAB staining. This data demonstrates the use of the WFDC12 antibody (C-term) for immunohistochemistry. Clinical relevance has not been evaluated.



WFDC12 Antibody (C-term) flow cytometric analysis of A549 cells (right histogram) compared to a negative control cell (left histogram). FITC-conjugated goat-anti-rabbit secondary antibodies were used for the analysis.