

Product datasheet for **AP54559PU-N**

DCAF13 (C-term) Rabbit Polyclonal Antibody

Product data:

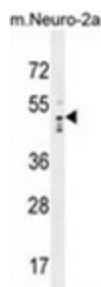
Product Type:	Primary Antibodies
Applications:	IHC, WB
Recommended Dilution:	ELISA: 1:1;000. Western blot: 1:100~500. Immunohistochemistry on paraffin sections: 1:50~100.
Reactivity:	Human, Mouse
Host:	Rabbit
Isotype:	Ig
Clonality:	Polyclonal
Immunogen:	KLH conjugated synthetic peptide between 372-402 amino acids from the C-terminal region of human WDSOF1
Specificity:	This antibody detects WDSOF1 (C-term).
Formulation:	PBS with 0.09% (W/V) sodium azide State: Aff - Purified State: Liquid Ig fraction
Concentration:	lot specific
Purification:	Protein A column followed by peptide affinity purification
Conjugation:	Unconjugated
Storage:	Store at 2 - 8 °C for up to six months or (in aliquots) at -20 °C for longer. Avoid repeated freezing and thawing.
Stability:	Shelf life: one year from despatch.
Gene Name:	DDB1 and CUL4 associated factor 13
Database Link:	Entrez Gene 223499 Mouse Entrez Gene 25879 Human Q9NV06
Background:	Possible role in ribosomal RNA processing (By similarity). May function as a substrate receptor for CUL4-DDB1 E3 ubiquitin-protein ligase complex.
Synonyms:	WDSOF1, WD repeat and SOF domain-containing protein 1



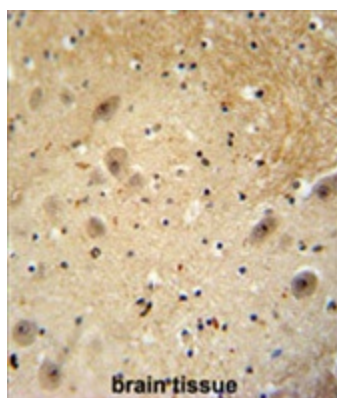
[View online »](#)

Note: **Molecular Weight:** 51402 Da

Product images:



WDSOF1 Antibody (C-term) western blot analysis in mouse Neuro-2a cell line lysates (35 ug/lane). This demonstrates the WDSOF1 antibody detected the WDSOF1 protein (arrow).



WDSOF1 antibody (C-term) immunohistochemistry analysis in formalin fixed and paraffin embedded human brain tissue followed by peroxidase conjugation of the secondary antibody and DAB staining. This data demonstrates the use of the WDSOF1 antibody (C-term) for immunohistochemistry. Clinical relevance has not been evaluated.