

## Product datasheet for **AP54558PU-N**

### WDR93 (C-term) Rabbit Polyclonal Antibody

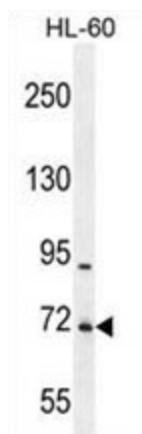
#### Product data:

Product Type:	Primary Antibodies
Applications:	FC, WB
Recommended Dilution:	ELISA: 1:1;000. Western blot: 1:100~500. Flow cytometry: 1:10~50.
Reactivity:	Human
Host:	Rabbit
Isotype:	Ig
Clonality:	Polyclonal
Immunogen:	KLH conjugated synthetic peptide between 579-608 amino acids from the C-terminal region of human WDR93
Specificity:	This antibody detects WDR93 (C-term).
Formulation:	PBS with 0.09% (W/V) sodium azide State: Aff - Purified State: Liquid Ig fraction
Concentration:	lot specific
Purification:	Protein A column followed by peptide affinity purification
Conjugation:	Unconjugated
Storage:	Store at 2 - 8 °C for up to six months or (in aliquots) at -20 °C for longer. Avoid repeated freezing and thawing.
Stability:	Shelf life: one year from despatch.
Gene Name:	WD repeat domain 93
Database Link:	<a href="#">Entrez Gene 56964 Human Q6P2C0</a>
Synonyms:	WDR93
Note:	<b>Molecular Weight:</b> 77378 Da

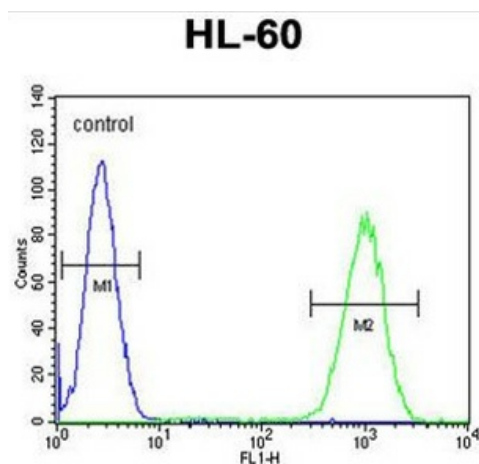


[View online »](#)

## Product images:



WDR93 Antibody (C-term) western blot analysis in HL-60 cell line lysates (35 ug/lane). This demonstrates the WDR93 antibody detected the WDR93 protein (arrow).



WDR93 Antibody (C-term) flow cytometric analysis of HL-60 cells (right histogram) compared to a negative control cell (left histogram). FITC-conjugated goat-anti-rabbit secondary antibodies were used for the analysis.