

Product datasheet for **AP54556PU-N**

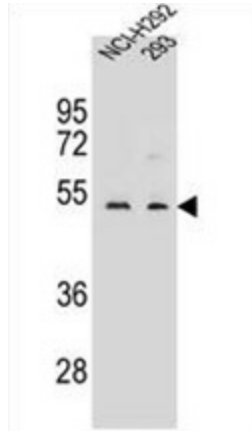
WDR86 (C-term) Rabbit Polyclonal Antibody

Product data:

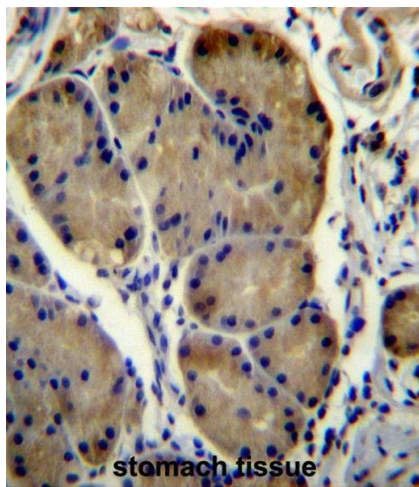
Product Type:	Primary Antibodies
Applications:	IHC, WB
Recommended Dilution:	ELISA: 1:1;000. Western blot: 1:100~500. Immunohistochemistry on paraffin sections: 1:10~50.
Reactivity:	Human
Host:	Rabbit
Isotype:	Ig
Clonality:	Polyclonal
Immunogen:	KLH conjugated synthetic peptide between 400-429 amino acids from the C-terminal region of human WDR86
Specificity:	This antibody detects WDR86 (C-term).
Formulation:	PBS with 0.09% (W/V) sodium azide State: Aff - Purified State: Liquid Ig fraction
Concentration:	lot specific
Purification:	Protein A column followed by peptide affinity purification
Conjugation:	Unconjugated
Storage:	Store at 2 - 8 °C for up to six months or (in aliquots) at -20 °C for longer. Avoid repeated freezing and thawing.
Stability:	Shelf life: one year from despatch.
Gene Name:	WD repeat domain 86
Database Link:	Entrez Gene 349136 Human Q86TI4
Synonyms:	WD repeat-containing protein 86
Note:	Molecular Weight: 40731 Da



[View online »](#)

Product images:

WDR86 Antibody (C-term) western blot analysis in NCI-H292, 293 cell line lysates (35 ug/lane). This demonstrates the WDR86 antibody detected the WDR86 protein (arrow).



WDR86 Antibody (C-term) immunohistochemistry analysis in formalin fixed and paraffin embedded human stomach tissue followed by peroxidase conjugation of the secondary antibody and DAB staining. This data demonstrates the use of WDR86 Antibody (C-term) for immunohistochemistry. Clinical relevance has not been evaluated.