

Product datasheet for **AP54555PU-N**

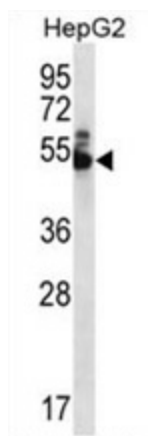
WDR85 (DPH7) (N-term) Rabbit Polyclonal Antibody

Product data:

Product Type:	Primary Antibodies
Applications:	WB
Recommended Dilution:	ELISA: 1:1;000. Western blot: 1:100~500.
Reactivity:	Human
Host:	Rabbit
Isotype:	Ig
Clonality:	Polyclonal
Immunogen:	KLH conjugated synthetic peptide between 32-51 amino acids from the N-terminal region of human WDR85
Specificity:	This antibody detects WDR85 (N-term).
Formulation:	PBS with 0.09% (W/V) sodium azide State: Aff - Purified State: Liquid Ig fraction
Concentration:	lot specific
Purification:	Protein A column followed by peptide affinity purification
Conjugation:	Unconjugated
Storage:	Store at 2 - 8 °C for up to six months or (in aliquots) at -20 °C for longer. Avoid repeated freezing and thawing.
Stability:	Shelf life: one year from despatch.
Gene Name:	diphthamide biosynthesis 7
Database Link:	Entrez Gene 92715 Human Q9BTV6
Background:	WDR85 is a WD repeat-containing protein that plays a role in the first step of diphthamide biosynthesis (Carette et al., 2009 [PubMed 19965467]).
Synonyms:	C9orf112
Note:	Molecular Weight: 50575 Da



[View online »](#)

Product images:

WDR85 Antibody (N-term) western blot analysis in HepG2 cell line lysates (35 ug/lane). This demonstrates the WDR85 antibody detected the WDR85 protein (arrow).