

Product datasheet for **AP54549PU-N**

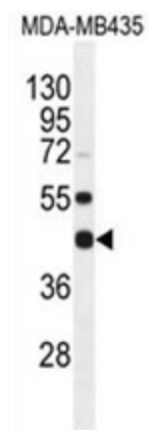
WDR51B (POC1B) (C-term) Rabbit Polyclonal Antibody

Product data:

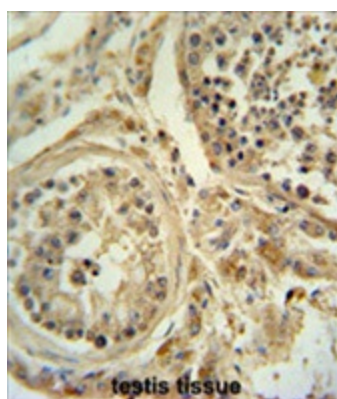
Product Type:	Primary Antibodies
Applications:	IHC, WB
Recommended Dilution:	Peptide ELISA: 1:1000. Western blot: 1:1000. Immunohistochemistry on paraffin sections: 1:50~100.
Reactivity:	Human
Host:	Rabbit
Isotype:	Ig
Clonality:	Polyclonal
Immunogen:	KLH conjugated synthetic peptide between 321-350 amino acids from the C-terminal region of human WDR51B
Specificity:	This antibody detects WDR51B (C-term).
Formulation:	PBS with 0.09% (W/V) sodium azide State: Aff - Purified State: Liquid Ig fraction
Concentration:	lot specific
Purification:	Protein A column followed by peptide affinity purification
Conjugation:	Unconjugated
Storage:	Store at 2 - 8 °C for up to six months or (in aliquots) at -20 °C for longer. Avoid repeated freezing and thawing.
Stability:	Shelf life: one year from despatch.
Gene Name:	POC1 centriolar protein B
Database Link:	Entrez Gene 282809 Human Q8TC44
Synonyms:	DKFZp686D0362; FLJ58458; PIX1; TUWD12; WDR51B
Note:	Molecular Weight: 53668 Da



[View online »](#)

Product images:

WDR51B Antibody (C-term) western blot analysis in MDA-MB435 cell line lysates (35 ug/lane). This demonstrates the WDR51B antibody detected the WDR51B protein (arrow).



WDR51B antibody (C-term) immunohistochemistry analysis in formalin fixed and paraffin embedded human testis tissue followed by peroxidase conjugation of the secondary antibody and DAB staining. This data demonstrates the use of the WDR51B antibody (C-term) for immunohistochemistry. Clinical relevance has not been evaluated.