

Product datasheet for **AP54547PU-N**

WDR49 (C-term) Rabbit Polyclonal Antibody

Product data:

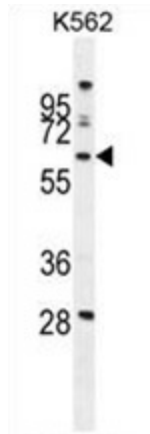
Product Type:	Primary Antibodies
Applications:	FC, IHC, WB
Recommended Dilution:	ELISA: 1:1;000. Western blot: 1:100~500. Immunohistochemistry on paraffin sections: 1:50~100. Flow cytometry: 1:10~50.
Reactivity:	Human
Host:	Rabbit
Isotype:	Ig
Clonality:	Polyclonal
Immunogen:	KLH conjugated synthetic peptide between 553-583 amino acids from the C-terminal region of human WDR49
Specificity:	This antibody detects WDR49 (C-term).
Formulation:	PBS with 0.09% (W/V) sodium azide State: Aff - Purified State: Liquid Ig fraction
Concentration:	lot specific
Purification:	Protein A column followed by peptide affinity purification
Conjugation:	Unconjugated
Storage:	Store at 2 - 8 °C for up to six months or (in aliquots) at -20 °C for longer. Avoid repeated freezing and thawing.
Stability:	Shelf life: one year from despatch.
Gene Name:	WD repeat domain 49
Database Link:	Entrez Gene 151790 Human Q8IV35
Background:	WDR49 contains 8 WD repeats. The exact function of WDR49 remains unknown. There are two named isoforms.
Synonyms:	FLJ33620



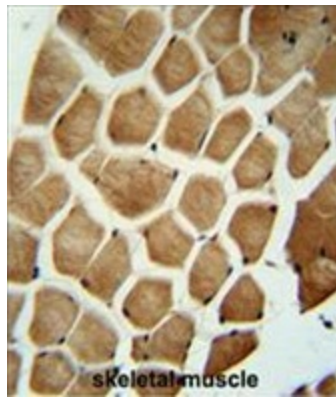
[View online »](#)

Note: **Molecular Weight:** 79295 Da; isoform 59kd Da

Product images:

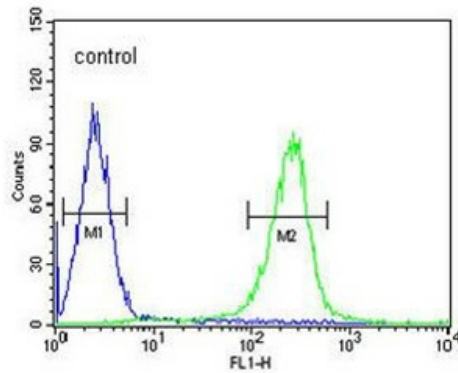


WDR49 Antibody (C-term) western blot analysis in K562 cell line lysates (35 ug/lane). This demonstrates the WDR49 antibody detected the WDR49 protein (arrow).



WDR49 antibody (C-term) immunohistochemistry analysis in formalin fixed and paraffin embedded human skeletal muscle followed by peroxidase conjugation of the secondary antibody and DAB staining. This data demonstrates the use of the WDR49 antibody (C-term) for immunohistochemistry. Clinical relevance has not been evaluated.

K562



WDR49 Antibody (C-term) flow cytometric analysis of K562 cells (right histogram) compared to a negative control cell (left histogram). FITC-conjugated goat-anti-rabbit secondary antibodies were used for the analysis.