

Product datasheet for **AP54543PU-N**

WDR41 (C-term) Rabbit Polyclonal Antibody

Product data:

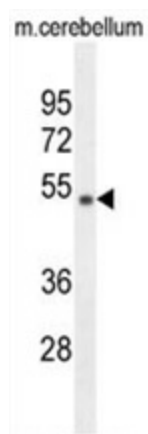
Product Type:	Primary Antibodies
Applications:	WB
Recommended Dilution:	ELISA: 1:1,000. Western blot: 1:100~500.
Reactivity:	Human, Mouse
Host:	Rabbit
Isotype:	Ig
Clonality:	Polyclonal
Immunogen:	KLH conjugated synthetic peptide between 252-282 amino acids from the C-terminal region of human WDR41
Specificity:	This antibody detects WDR41 (C-term).
Formulation:	PBS with 0.09% (W/V) sodium azide State: Aff – Purified State: Liquid Ig fraction
Concentration:	lot specific
Purification:	Protein A column followed by peptide affinity purification
Conjugation:	Unconjugated
Storage:	Store at 2 – 8 °C for up to six months or (in aliquots) at –20 °C for longer. Avoid repeated freezing and thawing.
Stability:	Shelf life: one year from despatch.
Gene Name:	WD repeat domain 41
Database Link:	Entrez Gene 55255 Human Q9HAD4



Synonyms: MSTP048

Note: **Molecular Weight:** 51728 Da

Product images:



WDR41 Antibody (C-term) western blot analysis in mouse cerebellum tissue lysates (35 ug/lane). This demonstrates the WDR41 antibody detected the WDR41 protein (arrow).