

## Product datasheet for **AP54542PU-N**

### DCAF12 (Center) Rabbit Polyclonal Antibody

#### Product data:

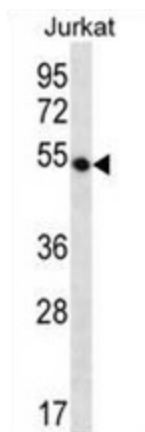
Product Type:	Primary Antibodies
Applications:	WB
Recommended Dilution:	ELISA: 1:1;000. Western blot: 1:100~500.
Reactivity:	Human
Host:	Rabbit
Isotype:	Ig
Clonality:	Polyclonal
Immunogen:	KLH conjugated synthetic peptide between 222-252 amino acids from the Central region of human WDR40A
Specificity:	This antibody detects WDR40A (Center).
Formulation:	PBS with 0.09% (W/V) sodium azide State: Aff - Purified State: Liquid Ig fraction
Concentration:	lot specific
Purification:	Protein A column followed by peptide affinity purification
Conjugation:	Unconjugated
Storage:	Store at 2 - 8 °C for up to six months or (in aliquots) at -20 °C for longer. Avoid repeated freezing and thawing.
Stability:	Shelf life: one year from despatch.
Gene Name:	DDB1 and CUL4 associated factor 12
Database Link:	<a href="#">Entrez Gene 25853 Human Q5T6F0</a>
Background:	This gene encodes a WD repeat-containing protein that interacts with the COP9 signalosome, a macromolecular complex that interacts with cullin-RING E3 ligases and regulates their activity by hydrolyzing cullin-Nedd8 conjugates.
Synonyms:	KIAA1892, TCC52, WDR40A



[View online »](#)

Note: **Molecular Weight:** 50517 Da

**Product images:**



WDR40A Antibody (Center) western blot analysis in Jurkat cell line lysates (35 ug/lane). This demonstrates the WDR40A antibody detected the WDR40A protein (arrow).