

Product datasheet for **AP54540PU-N**

WDR34 (Center) Rabbit Polyclonal Antibody

Product data:

Product Type:	Primary Antibodies
Applications:	WB
Recommended Dilution:	ELISA: 1:1;000. Western blot: 1:100~500.
Reactivity:	Human
Host:	Rabbit
Isotype:	Ig
Clonality:	Polyclonal
Immunogen:	KLH conjugated synthetic peptide between 304-334 amino acids from the Central region of human WDR34
Specificity:	This antibody detects WDR34 (Center).
Formulation:	PBS with 0.09% (W/V) sodium azide State: Aff - Purified State: Liquid Ig fraction
Concentration:	lot specific
Purification:	Protein A column followed by peptide affinity purification
Conjugation:	Unconjugated
Storage:	Store at 2 - 8 °C for up to six months or (in aliquots) at -20 °C for longer. Avoid repeated freezing and thawing.
Stability:	Shelf life: one year from despatch.
Gene Name:	WD repeat domain 34
Database Link:	Entrez Gene 89891 Human Q96EX3
Background:	This gene encodes a member of the WD repeat protein family. WD repeats are minimally conserved regions of approximately 40 amino acids typically bracketed by gly-his and trp-asp (GH-WD), which may facilitate formation of heterotrimeric or multiprotein complexes. Members of this family are involved in a variety of cellular processes, including cell cycle progression, signal transduction, apoptosis, and gene regulation.

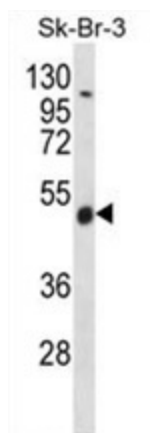


[View online »](#)

Synonyms: bA216B9.3; MGC20486; RP11-216B9.5

Note: **Molecular Weight:** 57801 Da

Product images:



WDR34 Antibody (Center) western blot analysis in SK-BR-3 cell line lysates (35 ug/lane). This demonstrates the WDR34 antibody detected the WDR34 protein (arrow).