

Product datasheet for **AP54538PU-N**

WDR3 (N-term) Rabbit Polyclonal Antibody

Product data:

Product Type:	Primary Antibodies
Applications:	FC, WB
Recommended Dilution:	Western blot: 1/1000. Flow CYtometry: 1/10-1/50.
Reactivity:	Human
Host:	Rabbit
Isotype:	Ig
Clonality:	Polyclonal
Immunogen:	KLH conjugated synthetic peptide between 208-236 amino acids from the N-terminal region of human WDR3
Specificity:	This antibody detects WDR3 (N-term).
Formulation:	PBS with 0.09% (W/V) sodium azide State: Aff - Purified State: Lliquid purified Ig fraction
Concentration:	lot specific
Purification:	Protein A column followed by peptide affinity purification
Conjugation:	Unconjugated
Storage:	Store undiluted at 2-8°C for one month or (in aliquots) at -20°C for longer. Avoid repeated freezing and thawing.
Stability:	Shelf life: one year from despatch.
Gene Name:	WD repeat domain 3
Database Link:	Entrez Gene 10885 Human Q9UNX4
Background:	This gene encodes a nuclear protein containing 10 WD repeats. WD repeats are approximately 30- to 40-amino acid domains containing several conserved residues, which usually include a trp-asn at the C-terminal end. Proteins belonging to the WD repeat family are involved in a variety of cellular processes, including cell cycle progression, signal transduction, apoptosis, and gene regulation.



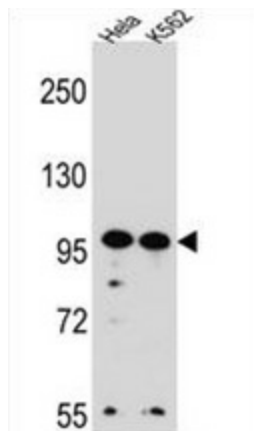
[View online »](#)

Synonyms: FLJ12796

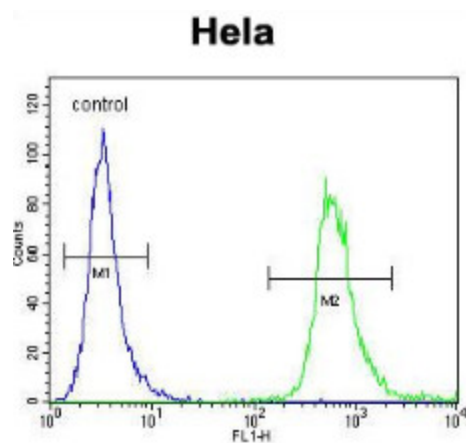
Note: **Molecular Weight:** 106099 Da

Protein Families: Druggable Genome

Product images:



WDR3 Antibody (N-term) western blot analysis in HeLa, K562 cell line lysates (35 ug/lane). This demonstrates the WDR3 antibody detected the WDR3 protein (arrow).



WDR3 Antibody (N-term) flow cytometric analysis of HeLa cells (right histogram) compared to a negative control cell (left histogram). FITC-conjugated goat-anti-rabbit secondary antibodies were used for the analysis.