

## Product datasheet for **AP54536PU-N**

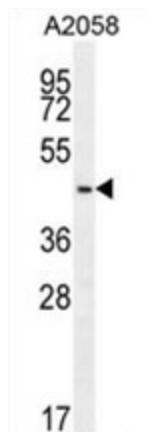
### **DCAF4L2 (N-term) Rabbit Polyclonal Antibody**

#### **Product data:**

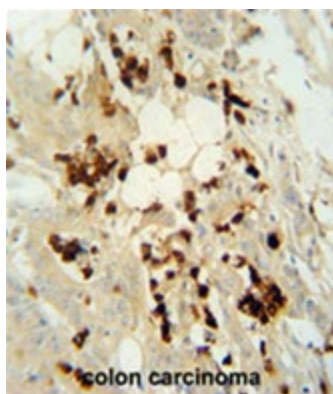
Product Type:	Primary Antibodies
Applications:	IHC, WB
Recommended Dilution:	<b>Peptide ELISA:</b> 1/1000. <b>Western blot:</b> 1/1000. <b>Flow Cytometry:</b> 1/10-1/50 <b>Immunohistochemistry on paraffin sections:</b> 1/50-1/100.
Reactivity:	Human
Host:	Rabbit
Isotype:	Ig
Clonality:	Polyclonal
Immunogen:	KLH conjugated synthetic peptide between 1-30 amino acids from the N-terminal region of human WDR21C
Specificity:	This antibody detects WDR21C (N-term).
Formulation:	PBS with 0.09% (W/V) sodium azide State: Aff - Purified State: Liquid Ig fraction
Concentration:	lot specific
Purification:	Protein A column followed by peptide affinity purification
Conjugation:	Unconjugated
Storage:	Store undiluted at 2-8°C for one month or (in aliquots) at -20°C for longer. Avoid repeated freezing and thawing.
Stability:	Shelf life: one year from despatch.
Gene Name:	DDB1 and CUL4 associated factor 4-like 2
Database Link:	<a href="#">Entrez Gene 138009 Human Q8NA75</a>
Synonyms:	WDR21C
Note:	<b>Molecular Weight:</b> 43747 Da



[View online »](#)

**Product images:**

WDR21C Antibody (N-term) western blot analysis in A2058 cell line lysates (35 ug/lane). This demonstrates the WDR21C antibody detected the WDR21C protein (arrow).



WDR21C antibody (N-term) immunohistochemistry analysis in formalin fixed and paraffin embedded human colon carcinoma followed by peroxidase conjugation of the secondary antibody and DAB staining. This data demonstrates the use of the WDR21C antibody (N-term) for immunohistochemistry. Clinical relevance has not been evaluated.