

## Product datasheet for **AP54535PU-N**

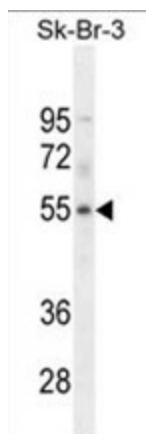
### WDR21B (DCAF4L1) (C-term) Rabbit Polyclonal Antibody

#### Product data:

Product Type:	Primary Antibodies
Applications:	WB
Recommended Dilution:	ELISA: 1:1;000. Western blot: 1:100~500.
Reactivity:	Human
Host:	Rabbit
Isotype:	Ig
Clonality:	Polyclonal
Immunogen:	KLH conjugated synthetic peptide between 244-274 amino acids from the C-terminal region of human WDR21B
Specificity:	This antibody detects WDR21B (C-term).
Formulation:	PBS with 0.09% (W/V) sodium azide State: Aff - Purified State: Liquid Ig fraction
Concentration:	lot specific
Purification:	Protein A column followed by peptide affinity purification
Conjugation:	Unconjugated
Storage:	Store at 2 - 8 °C for up to six months or (in aliquots) at -20 °C for longer. Avoid repeated freezing and thawing.
Stability:	Shelf life: one year from despatch.
Gene Name:	DDB1 and CUL4 associated factor 4-like 1
Database Link:	<a href="#">Entrez Gene 285429 Human Q3SXM0</a>
Synonyms:	WDR21B
Note:	<b>Molecular Weight:</b> 44264 Da



[View online »](#)

**Product images:**

WDR21B Antibody (C-term) western blot analysis in SK-BR-3 cell line lysates (35 ug/lane). This demonstrates the WDR21B antibody detected the WDR21B protein (arrow).