

Product datasheet for **AP54534PU-N**

WDR12 (Center) Rabbit Polyclonal Antibody

Product data:

Product Type:	Primary Antibodies
Applications:	IHC, WB
Recommended Dilution:	ELISA: 1:1;000. Western blot: 1:100~500. Immunohistochemistry on paraffin sections 1:10~50.
Reactivity:	Human
Host:	Rabbit
Isotype:	Ig
Clonality:	Polyclonal
Immunogen:	KLH conjugated synthetic peptide between 209-239 amino acids from the Central region of human WDR12
Specificity:	This antibody detects WDR12 (Center).
Formulation:	PBS with 0.09% (W/V) sodium azide State: Aff - Purified State: Liquid Ig fraction
Concentration:	lot specific
Purification:	Protein A column followed by peptide affinity purification
Conjugation:	Unconjugated
Storage:	Store at 2 - 8 °C for up to six months or (in aliquots) at -20 °C for longer. Avoid repeated freezing and thawing.
Stability:	Shelf life: one year from despatch.
Gene Name:	WD repeat domain 12
Database Link:	Entrez Gene 55759 Human Q9GZL7



[View online »](#)

Background:

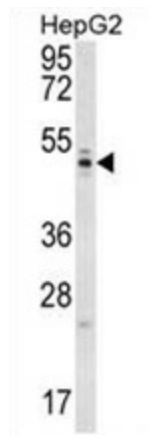
This gene encodes a member of the WD repeat protein family. WD repeats are minimally conserved regions of approximately 40 amino acids typically bracketed by gly-his and trp-asp (GH-WD), which may facilitate formation of heterotrimeric or multiprotein complexes. Members of this family are involved in a variety of cellular processes, including cell cycle progression, signal transduction, apoptosis, and gene regulation. This protein is highly similar to the mouse WD repeat domain 12 protein at the amino acid level. The protein encoded by this gene is a component of a nucleolar protein complex that affects maturation of the large ribosomal subunit.

Synonyms:

FLJ10881; FLJ12719; FLJ12720; YTM1

Note:

Molecular Weight: 47708 Da

Product images:

WDR12 Antibody (Center) western blot analysis in HepG2 cell line lysates (35 ug/lane). This demonstrates the WDR12 antibody detected the WDR12 protein (arrow).