

Product datasheet for **AP54533PU-N**

METTL27 (N-term) Rabbit Polyclonal Antibody

Product data:

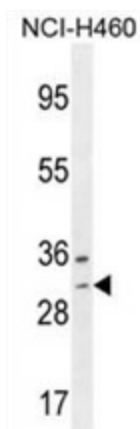
Product Type:	Primary Antibodies
Applications:	IHC, WB
Recommended Dilution:	ELISA: 1:1;000. Western blot: 1:100~500. Immunohistochemistry on paraffin sections: 1:50~100.
Reactivity:	Human
Host:	Rabbit
Isotype:	Ig
Clonality:	Polyclonal
Immunogen:	KLH conjugated synthetic peptide between 12-42 amino acids from the N-terminal region of human WBSCR27
Specificity:	This antibody detects WBSCR27 (N-term).
Formulation:	PBS with 0.09% (W/V) sodium azide State: Aff - Purified State: Liquid Ig fraction
Concentration:	lot specific
Purification:	Protein A column followed by peptide affinity purification
Conjugation:	Unconjugated
Storage:	Store at 2 - 8 °C for up to six months or (in aliquots) at -20 °C for longer. Avoid repeated freezing and thawing.
Stability:	Shelf life: one year from despatch.
Gene Name:	Williams Beuren syndrome chromosome region 27
Database Link:	Entrez Gene 155368 Human Q8N6F8
Background:	WBSCR27 encodes a protein belonging to ubiE/COQ5 methyltransferase family. The gene is deleted in Williams syndrome, a multisystem developmental disorder caused by the deletion of contiguous genes at 7q11.22-q11.23
Synonyms:	MGC40131



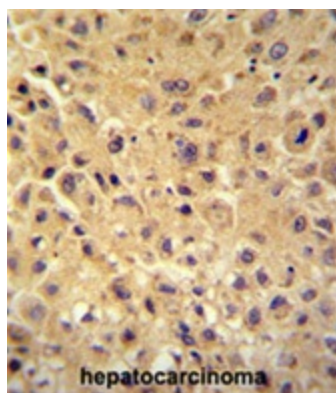
[View online »](#)

Note: **Molecular Weight:** 26522 Da

Product images:



WBSCR27 Antibody (N-term) western blot analysis in NCI-H460 cell line lysates (35 ug/lane). This demonstrates the WBSCR27 antibody detected the WBSCR27 protein (arrow).



WBSCR27 antibody (N-term) immunohistochemistry analysis in formalin fixed and paraffin embedded human hepatocarcinoma followed by peroxidase conjugation of the secondary antibody and DAB staining. This data demonstrates the use of the WBSCR27 antibody (N-term) for immunohistochemistry. Clinical relevance has not been evaluated.