

## Product datasheet for **AP54528PU-N**

### **B7H4 (VTCN1) (Center) Rabbit Polyclonal Antibody**

#### Product data:

Product Type:	Primary Antibodies
Applications:	WB
Recommended Dilution:	ELISA: 1:1;000. Western blot: 1:100~500.
Reactivity:	Human
Host:	Rabbit
Isotype:	Ig
Clonality:	Polyclonal
Immunogen:	KLH conjugated synthetic peptide between 79~108 amino acids from the Central region of human VTCN1
Specificity:	This antibody detects VTCN1 / B7H4 (Center).
Formulation:	PBS with 0.09% (W/V) sodium azide State: Aff - Purified State: Liquid Ig fraction
Concentration:	lot specific
Purification:	Protein A column followed by peptide affinity purification
Conjugation:	Unconjugated
Storage:	Store at 2 - 8 °C for up to six months or (in aliquots) at -20 °C for longer. Avoid repeated freezing and thawing.
Stability:	Shelf life: one year from despatch.
Gene Name:	V-set domain containing T cell activation inhibitor 1
Database Link:	<a href="#">Entrez Gene 79679 Human Q7Z7D3</a>
Background:	VTCN1 belongs to the B7 family (see CD80; MIM 112203) of costimulatory proteins. These proteins are expressed on the surface of antigen-presenting cells and interact with ligands (e.g., CD28; MIM 186760) on T lymphocytes.
Synonyms:	B7-H4, B7x, B7h.5, B7S1, UNQ659/PRO1291

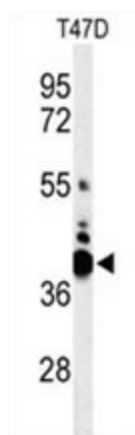


[View online »](#)

Note: **Molecular Weight:** 30878 Da

Protein Families: Transmembrane

**Product images:**



Western blot analysis of VTCN1 Antibody (Center) in T47D cell line lysates (35 ug/lane). VTCN1 (arrow) was detected using the purified Pab.