

Product datasheet for **AP54526PU-N**

CHX10 (VSX2) (C-term) Rabbit Polyclonal Antibody

Product data:

Product Type:	Primary Antibodies
Applications:	WB
Recommended Dilution:	ELISA: 1:1;000. Western blot: 1:100~500.
Reactivity:	Human
Host:	Rabbit
Isotype:	Ig
Clonality:	Polyclonal
Immunogen:	KLH conjugated synthetic peptide between 262-291 amino acids from the C-terminal region of human VSX2
Specificity:	This antibody detects VSX2 / CHX10 (C-term).
Formulation:	PBS with 0.09% (W/V) sodium azide State: Aff - Purified State: Liquid Ig fraction
Concentration:	lot specific
Purification:	Protein A column followed by peptide affinity purification
Conjugation:	Unconjugated
Storage:	Store at 2 - 8 °C for up to six months or (in aliquots) at -20 °C for longer. Avoid repeated freezing and thawing.
Stability:	Shelf life: one year from despatch.
Gene Name:	visual system homeobox 2
Database Link:	Entrez Gene 338917 Human P58304
Background:	This gene encodes a homeobox protein originally described as a retina-specific transcription factor. Mutations in this gene are associated with microphthalmia, cataracts and iris abnormalities.
Synonyms:	HOX10

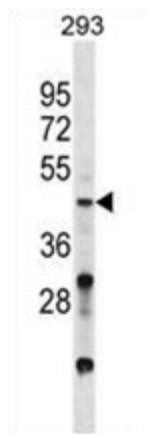


[View online »](#)

Note: **Molecular Weight:** 39411 Da

Protein Families: Transcription Factors

Product images:



VSX2 Antibody (C-term) western blot analysis in 293 cell line lysates (35 ug/lane). This demonstrates the VSX2 antibody detected the VSX2 protein (arrow).