

Product datasheet for **AP54525PU-N**

VSX1 (Center) Rabbit Polyclonal Antibody

Product data:

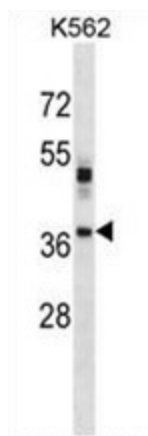
Product Type:	Primary Antibodies
Applications:	WB
Recommended Dilution:	ELISA: 1:1;000. Western blot: 1:100~500.
Reactivity:	Human
Host:	Rabbit
Isotype:	Ig
Clonality:	Polyclonal
Immunogen:	KLH conjugated synthetic peptide between 124-154 amino acids from the Central region of human VSX1
Specificity:	This antibody detects VSX1 / RINX (Center).
Formulation:	PBS with 0.09% (W/V) sodium azide State: Aff - Purified State: Liquid Ig fraction
Concentration:	lot specific
Purification:	Protein A column followed by peptide affinity purification
Conjugation:	Unconjugated
Storage:	Store at 2 - 8 °C for up to six months or (in aliquots) at -20 °C for longer. Avoid repeated freezing and thawing.
Stability:	Shelf life: one year from despatch.
Gene Name:	visual system homeobox 1
Database Link:	Entrez Gene 30813 Human Q9NZR4
Background:	VSX1 contains a paired-like homeodomain and binds to the core of the locus control region of the red/green visual pigment gene cluster. The encoded protein may regulate expression of the cone opsin genes early in development. Mutations in this gene can cause posterior polymorphous corneal dystrophy and keratoconus.
Synonyms:	Visual system homeobox 1



[View online »](#)

Note: **Molecular Weight:** 38431 Da

Product images:



VSX1 Antibody (Center) western blot analysis in K562 cell line lysates (35 ug/lane). This demonstrates the VSX1 antibody detected the VSX1 protein (arrow).