

Product datasheet for **AP54523PU-N**

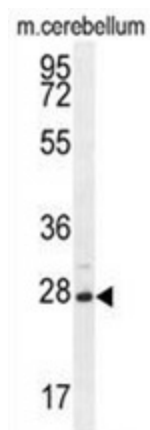
VSTM2A (Center) Rabbit Polyclonal Antibody

Product data:

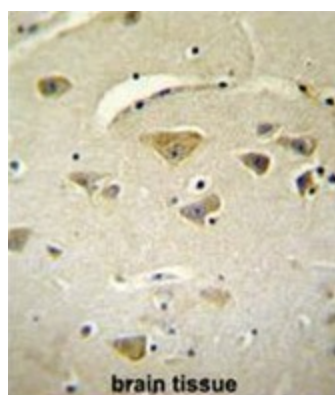
Product Type:	Primary Antibodies
Applications:	IHC, WB
Recommended Dilution:	Western blot: 1:1000. Immunohistochemistry on paraffin sections: 1:50-1:100.
Reactivity:	Human, Mouse
Host:	Rabbit
Isotype:	Ig
Clonality:	Polyclonal
Immunogen:	KLH conjugated synthetic peptide between 97-126 amino acids from the Central region of human VSTM2A
Specificity:	This antibody detects VSTM2A (Center).
Formulation:	PBS with 0.09% (W/V) sodium azide State: Aff - Purified State: Liquid Ig fraciton
Concentration:	lot specific
Purification:	Protein A column followed by peptide affinity purification
Conjugation:	Unconjugated
Storage:	Store at 2 - 8 °C for up to six months or (in aliquots) at -20 °C for longer. Avoid repeated freezing and thawing.
Stability:	Shelf life: one year from despatch.
Gene Name:	V-set and transmembrane domain containing 2A
Database Link:	Entrez Gene 211739 Mouse Entrez Gene 222008 Human Q8TAG5
Background:	Putative solute transporter (Potential).
Synonyms:	VSTM2
Note:	Molecular Weight: 25833 Da
Protein Families:	Secreted Protein, Transmembrane



[View online »](#)

Product images:

VSTM2A Antibody (Center) western blot analysis in mouse cerebellum tissue lysates (35 ug/lane). This demonstrates the VSTM2A antibody detected the VSTM2A protein (arrow).



VSTM2A Antibody (Center) immunohistochemistry analysis in formalin fixed and paraffin embedded human brain tissue followed by peroxidase conjugation of the secondary antibody and DAB staining. This data demonstrates the use of VSTM2A Antibody (Center) for immunohistochemistry. Clinical relevance has not been evaluated.