

Product datasheet for **AP54522PU-N**

VILIP1 (VSNL1) (Center) Rabbit Polyclonal Antibody

Product data:

Product Type:	Primary Antibodies
Applications:	IHC, WB
Recommended Dilution:	ELISA: 1:1;000. Western blot: 1:100~500. Immunohistochemistry on paraffin sections: 1:10~50.
Reactivity:	Human, Mouse
Host:	Rabbit
Isotype:	Ig
Clonality:	Polyclonal
Immunogen:	KLH conjugated synthetic peptide between 46-75 amino acids from the Central region of human VSNL1
Specificity:	This antibody detects Visinin-like protein 1 / HLP3 (Center).
Formulation:	PBS with 0.09% (W/V) sodium azide State: Aff - Purified State: Liquid Ig fraction
Concentration:	lot specific
Purification:	Protein A column followed by peptide affinity purification
Conjugation:	Unconjugated
Storage:	Store at 2 - 8 °C for up to six months or (in aliquots) at -20 °C for longer. Avoid repeated freezing and thawing.
Stability:	Shelf life: one year from despatch.
Gene Name:	visinin like 1
Database Link:	Entrez Gene 26950 Mouse Entrez Gene 7447 Human P62760



[View online »](#)

Background:

This gene is a member of the visinin/recoverin subfamily of neuronal calcium sensor proteins. The encoded protein is strongly expressed in granule cells of the cerebellum where it associates with membranes in a calcium-dependent manner and modulates intracellular signaling pathways of the central nervous system by directly or indirectly regulating the activity of adenylyl cyclase. Alternatively spliced transcript variants have been observed, but their full-length nature has not been determined.

Synonyms:

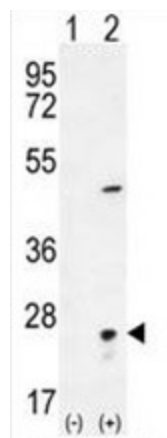
VILIP, VLP-1, VSNL1, VISL1, Neural visinin-like protein 1, NVL-1, NVP-1, Hippocalcin-like protein 3

Note:

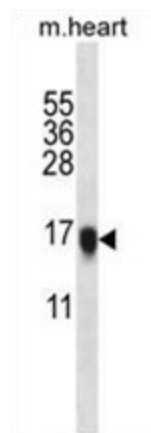
Molecular Weight: 22142 Da

Protein Families:

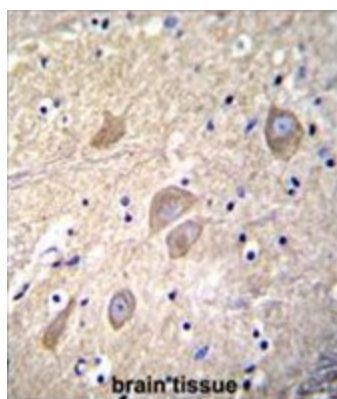
Druggable Genome

Product images:


Western blot analysis of VSNL1 (arrow) using rabbit polyclonal VSNL1 Antibody (Center). 293 cell lysates (2 ug/lane) either nontransfected (Lane 1) or transiently transfected (Lane 2) with the VSNL1 gene.



VSNL1 Antibody (Center) western blot analysis in mouse heart tissue lysates (35 ug/lane). This demonstrates the VSNL1 antibody detected the VSNL1 protein (arrow).



VSNL1 Antibody (Center) immunohistochemistry analysis in formalin fixed and paraffin embedded human brain tissue followed by peroxidase conjugation of the secondary antibody and DAB staining. This data demonstrates the use of VSNL1 Antibody (Center) for immunohistochemistry. Clinical relevance has not been evaluated.