

## Product datasheet for **AP54519PU-N**

### SPON1 (N-term) Rabbit Polyclonal Antibody

#### Product data:

Product Type:	Primary Antibodies
Applications:	IHC, WB
Recommended Dilution:	<b>Western blot:</b> 1:1000. <b>Immunohistochemistry on paraffin sections:</b> 1:10~50.
Reactivity:	Bovine, Human, Mouse
Host:	Rabbit
Isotype:	Ig
Clonality:	Polyclonal
Immunogen:	KLH conjugated synthetic peptide between 15-43 amino acids from the N-terminal region of human VSGP/F-spondin
Specificity:	This antibody detects Spondin 1 / SPON1 (N-term).
Formulation:	PBS with 0.09% (W/V) sodium azide State: Aff - Purified State: Liquid Ig fraction
Concentration:	lot specific
Purification:	Protein A column followed by peptide affinity purification
Conjugation:	Unconjugated
Storage:	Store at 2 - 8 °C for up to six months or (in aliquots) at -20 °C for longer. Avoid repeated freezing and thawing.
Stability:	Shelf life: one year from despatch.
Gene Name:	spondin 1
Database Link:	<a href="#">Entrez Gene 10418 Human Q9HCB6</a>
Background:	Cell adhesion protein that promotes the attachment of spinal cord and sensory neuron cells and the outgrowth of neurites in vitro. May contribute to the growth and guidance of axons in both the spinal cord and the PNS (By similarity). Major factor for vascular smooth muscle cell.
Synonyms:	Spondin-1, F-spondin, VSGP, KIAA0762

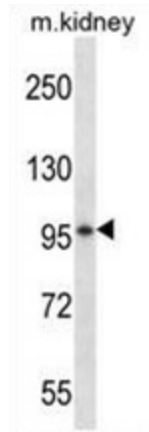


[View online »](#)

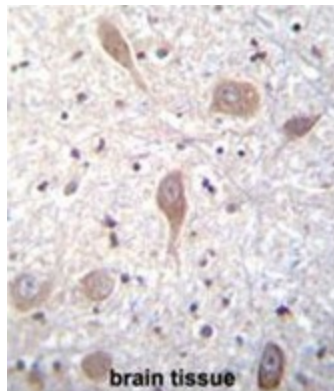
Note: **Molecular Weight:** 90973 Da

Protein Families: Secreted Protein

### Product images:



VSGP/F-spondin Antibody (N-term) western blot analysis in mouse kidney tissue lysates (35 ug/lane). This demonstrates the VSGP/F-spondin antibody detected the VSGP/F-spondin protein (arrow).



VSGP/F-spondin Antibody (N-term) immunohistochemistry analysis in formalin fixed and paraffin embedded human brain tissue followed by peroxidase conjugation of the secondary antibody and DAB staining. This data demonstrates the use of VSGP/F-spondin Antibody (N-term) for immunohistochemistry. Clinical relevance has not been evaluated.