

Product datasheet for **AP54518PU-N**

VPS54 (Center) Rabbit Polyclonal Antibody

Product data:

Product Type:	Primary Antibodies
Applications:	IHC, WB
Recommended Dilution:	ELISA: 1:1;000. Western blot: 1:100~500. Immunohistochemistry on paraffin sections: 1:10~50.
Reactivity:	Human, Mouse
Host:	Rabbit
Isotype:	Ig
Clonality:	Polyclonal
Immunogen:	KLH conjugated synthetic peptide between 464-491 amino acids from the Central region of human VPS54
Specificity:	This antibody detects VPS54 (Center).
Formulation:	PBS with 0.09% (W/V) sodium azide State: Aff - Purified State: Liquid Ig fraction
Concentration:	lot specific
Purification:	Protein A column followed by peptide affinity purification
Conjugation:	Unconjugated
Storage:	Store at 2 - 8 °C for up to six months or (in aliquots) at -20 °C for longer. Avoid repeated freezing and thawing.
Stability:	Shelf life: one year from despatch.
Gene Name:	VPS54, GARP complex subunit
Database Link:	Entrez Gene 245944 Mouse Entrez Gene 51542 Human Q9P1Q0



[View online »](#)

Background:

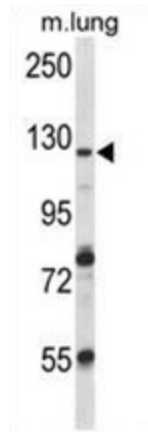
This gene encodes for a protein that in yeast forms part of a trimeric vacuolar-protein-sorting complex that is required for retrograde transport of proteins from prevacuoles to the late Golgi compartment. As in yeast, mammalian Vps54 proteins contain a coiled-coil region and dileucine motifs. Alternative splicing results in multiple transcript variants encoding different isoforms.

Synonyms:

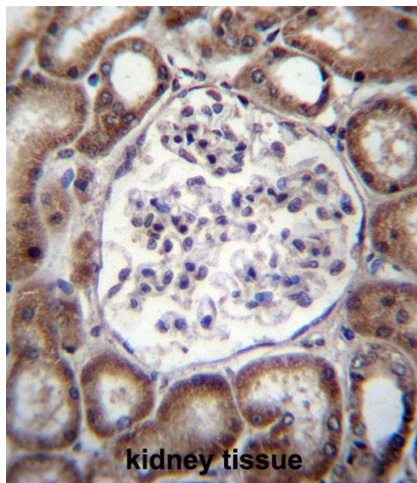
HOM-HCC-8, HCC8, SLP-8p

Note:

Molecular Weight: 110589 Da

Product images:

VPS54 Antibody (Center) western blot analysis in mouse lung tissue lysates (35 ug/lane). This demonstrates the VPS54 antibody detected the VPS54 protein (arrow).



VPS54 Antibody (Center) immunohistochemistry analysis in formalin fixed and paraffin embedded human kidney tissue followed by peroxidase conjugation of the secondary antibody and DAB staining. This data demonstrates the use of VPS54 Antibody (Center) for immunohistochemistry. Clinical relevance has not been evaluated.