

Product datasheet for **AP54515PU-N**

VPS37B (Center) Rabbit Polyclonal Antibody

Product data:

Product Type:	Primary Antibodies
Applications:	WB
Recommended Dilution:	ELISA: 1:1;000. Western blot: 1:100~500.
Reactivity:	Human
Host:	Rabbit
Isotype:	Ig
Clonality:	Polyclonal
Immunogen:	KLH conjugated synthetic peptide between 98-127 amino acids from the Central region of human VPS37B
Specificity:	This antibody detects VPS37B (Center).
Formulation:	PBS with 0.09% (W/V) sodium azide State: Aff - Purified State: Liquid Ig fraction
Concentration:	lot specific
Purification:	Protein A column followed by peptide affinity purification
Conjugation:	Unconjugated
Storage:	Store at 2 - 8 °C for up to six months or (in aliquots) at -20 °C for longer. Avoid repeated freezing and thawing.
Stability:	Shelf life: one year from despatch.
Gene Name:	VPS37B, ESCRT-I subunit
Database Link:	Entrez Gene 79720 Human Q9H9H4
Background:	VPS37B is component of the ESCRT-I complex, a regulator of vesicular trafficking process. Required for the sorting of endocytic ubiquitinated cargos into multivesicular bodies. May be involved in cell growth and differentiation.
Synonyms:	FLJ12750; hVps37B

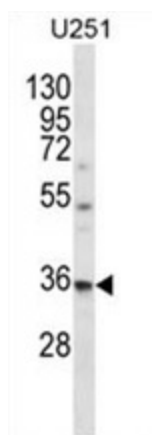


[View online »](#)

Note: **Molecular Weight:** 31307 Da

Protein Pathways: Endocytosis

Product images:



VPS37B Antibody (Center) western blot analysis in U251 cell line lysates (35 ug/lane). This demonstrates the VPS37B antibody detected the VPS37B protein (arrow).