

Product datasheet for **AP54514PU-N**

VPS11 (C-term) Rabbit Polyclonal Antibody

Product data:

Product Type:	Primary Antibodies
Applications:	WB
Recommended Dilution:	ELISA: 1:1;000. Western blot: 1:100~500.
Reactivity:	Human
Host:	Rabbit
Isotype:	Ig
Clonality:	Polyclonal
Immunogen:	KLH conjugated synthetic peptide between 771-800 amino acids from the C-terminal region of human VPS11
Specificity:	This antibody detects RNF108 / VPS11 (C-term).
Formulation:	PBS with 0.09% (W/V) sodium azide State: Aff - Purified State: Liquid Ig fraction
Concentration:	lot specific
Purification:	Protein A column; followed by peptide affinity purification
Conjugation:	Unconjugated
Storage:	Store at 2 - 8 °C for up to six months or (in aliquots) at -20 °C for longer. Avoid repeated freezing and thawing.
Stability:	Shelf life: one year from despatch.
Gene Name:	VPS11, CORVET/HOPS core subunit
Database Link:	Entrez Gene 55823 Human Q9H270



[View online »](#)

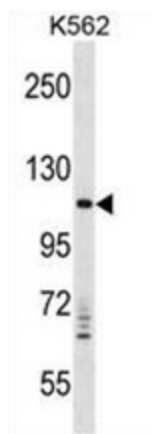
Background: Vesicle mediated protein sorting plays an important role in segregation of intracellular molecules into distinct organelles. Genetic studies in yeast have identified more than 40 vacuolar protein sorting (VPS) genes involved in vesicle transport to vacuoles. This gene encodes the human homolog of yeast class C Vps11 protein. The mammalian class C Vps proteins are predominantly associated with late endosomes/lysosomes, and like their yeast counterparts, may mediate vesicle trafficking steps in the endosome/lysosome pathway.

Synonyms: PP3476

Note: **Molecular Weight:** 107837 Da

Protein Families: Druggable Genome

Product images:



VPS11 Antibody (C-term) western blot analysis in K562 cell line lysates (35 ug/lane). This demonstrates the VPS11 antibody detected the VPS11 protein (arrow).