

Product datasheet for **AP54513PU-N**

VIT (C-term) Rabbit Polyclonal Antibody

Product data:

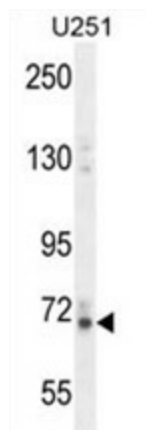
Product Type:	Primary Antibodies
Applications:	IHC, WB
Recommended Dilution:	ELISA: 1:1;000. Western blot: 1:100~500. Immunohistochemistry on paraffin sections: 1:50~100.
Reactivity:	Human
Host:	Rabbit
Isotype:	Ig
Clonality:	Polyclonal
Immunogen:	KLH conjugated synthetic peptide between 574-603 amino acids from the C-terminal region of human VITRN
Specificity:	This antibody detects Vitrin (VIT) (C-term).
Formulation:	PBS with 0.09% (W/V) sodium azide State: Aff - Purified State: Liquid Ig fraction
Concentration:	lot specific
Purification:	Protein A column followed by peptide affinity purification
Conjugation:	Unconjugated
Storage:	Store at 2 - 8 °C for up to six months or (in aliquots) at -20 °C for longer. Avoid repeated freezing and thawing.
Stability:	Shelf life: one year from despatch.
Gene Name:	vitrin
Database Link:	Entrez Gene 5212 Human Q6UXI7
Background:	Promotes matrix assembly and cell adhesiveness (By similarity).
Synonyms:	DKFZp313L1517; H_NH0294L11.1; MGC70561; MGC149746; vitrin; WUGSC:H_NH0294L11.1
Note:	Molecular Weight: 73930 Da



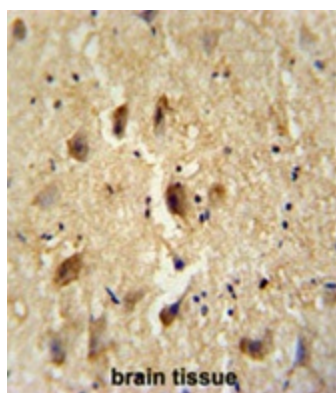
[View online »](#)

Protein Families: Secreted Protein

Product images:



VITRN Antibody (C-term) western blot analysis in U251 cell line lysates (35 ug/lane). This demonstrates the VITRN antibody detected the VITRN protein (arrow).



VITRN antibody (C-term) immunohistochemistry analysis in formalin fixed and paraffin embedded human brain tissue followed by peroxidase conjugation of the secondary antibody and DAB staining. This data demonstrates the use of the VITRN antibody (C-term) for immunohistochemistry. Clinical relevance has not been evaluated.