

Product datasheet for **AP54512PU-N**

VILL (Center) Rabbit Polyclonal Antibody

Product data:

Product Type:	Primary Antibodies
Applications:	IF, IHC, WB
Recommended Dilution:	ELISA: 1:1;000. Western blot: 1:100~500. Immunohistochemistry on paraffin sections: 1:50~100. Immunofluorescence: 1:10~50.
Reactivity:	Human
Host:	Rabbit
Isotype:	Ig
Clonality:	Polyclonal
Immunogen:	KLH conjugated synthetic peptide between 392-420 amino acids from the Central region of human VILL
Specificity:	This antibody detects VILL (Center).
Formulation:	PBS with 0.09% (W/V) sodium azide State: Aff - Purified State: Liquid Ig fraction
Concentration:	lot specific
Purification:	Protein A column followed by peptide affinity purification
Conjugation:	Unconjugated
Storage:	Store at 2 - 8 °C for up to six months or (in aliquots) at -20 °C for longer. Avoid repeated freezing and thawing.
Stability:	Shelf life: one year from despatch.
Gene Name:	villin-like
Database Link:	Entrez Gene 50853 Human O15195
Background:	The protein encoded by this gene belongs to the villin/gelsolin family. It contains 6 gelsolin-like repeats and a headpiece domain. It may play a role in actin-bundling. [provided by RefSeq].

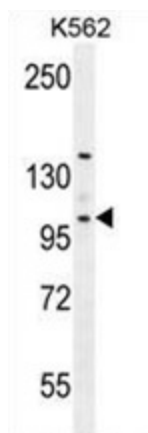


[View online »](#)

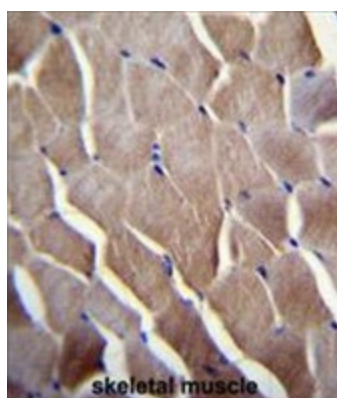
Synonyms: Villin-like protein

Note: **Molecular Weight:** 95907 Da

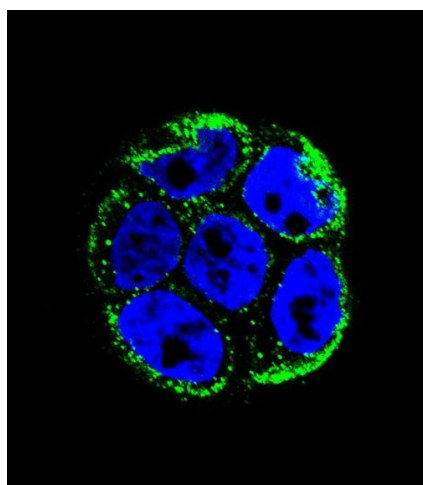
Product images:



VILL Antibody (Center) western blot analysis in K562 cell line lysates (35 ug/lane). This demonstrates the VILL antibody detected the VILL protein (arrow).



VILL Antibody (Center) immunohistochemistry analysis in formalin fixed and paraffin embedded human skeletal muscle followed by peroxidase conjugation of the secondary antibody and DAB staining. This data demonstrates the use of VILL Antibody (Center) for immunohistochemistry. Clinical relevance has not been evaluated.



Confocal immunofluorescent analysis of VILL Antibody (Center) with WiDr cell followed by Alexa Fluor 488-conjugated goat anti-rabbit IgG (green). DAPI was used to stain the cell nuclear (blue).