

## Product datasheet for **AP54511PU-N**

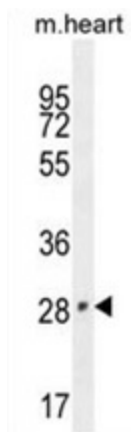
### VGLL2 (N-term) Rabbit Polyclonal Antibody

#### Product data:

Product Type:	Primary Antibodies
Applications:	WB
Recommended Dilution:	ELISA: 1:1;000. Western blot: 1:100~500.
Reactivity:	Human, Mouse
Host:	Rabbit
Isotype:	Ig
Clonality:	Polyclonal
Immunogen:	KLH conjugated synthetic peptide between 52-81 amino acids from the N-terminal region of human VGLL2
Specificity:	This antibody detects VGLL2 / VITO1 (N-term).
Formulation:	PBS with 0.09% (W/V) sodium azide State: Aff - Purified State: Liquid Ig fraction
Concentration:	lot specific
Purification:	Protein A column followed by peptide affinity purification
Conjugation:	Unconjugated
Storage:	Store at 2 - 8 °C for up to six months or (in aliquots) at -20 °C for longer. Avoid repeated freezing and thawing.
Stability:	Shelf life: one year from despatch.
Gene Name:	vestigial like family member 2
Database Link:	<a href="#">Entrez Gene 215031 Mouse</a> <a href="#">Entrez Gene 245806 Human</a> <a href="#">Q8N8G2</a>
Background:	May act as a specific coactivator for the mammalian TEFs. May play a role in the development of skeletal muscles.
Synonyms:	Vgl-2
Note:	<b>Molecular Weight:</b> 33426 Da



[View online »](#)

**Product images:**

VGLL2 Antibody (N-term) western blot analysis in mouse heart tissue lysates (35 ug/lane). This demonstrates the VGLL2 antibody detected the VGLL2 protein (arrow).