

## Product datasheet for **AP54509PU-N**

### VEGF Receptor 1 (FLT1) Rabbit Polyclonal Antibody

#### Product data:

Product Type:	Primary Antibodies
Applications:	FC, IHC, WB
Recommended Dilution:	<b>ELISA:</b> 1/1000. <b>Western blot:</b> 1/50-1/100. <b>Flow Cytometry:</b> 1/10-1/50. <b>Immunohistochemistry on Paraffin Sections:</b> 1/50-1/100.
Reactivity:	Human
Host:	Rabbit
Isotype:	Ig
Clonality:	Polyclonal
Immunogen:	VEGFR1 his fusion protein
Specificity:	This antibody detects VEGFR-1 / Flt-1.
Formulation:	PBS with 0.09% (W/V) Sodium Azide as preservative State: Purified State: Liquid Ig fraction
Concentration:	lot specific
Purification:	Saturated Ammonium Sulfate (SAS) precipitation followed by dialysis against PBS
Conjugation:	Unconjugated
Storage:	Store undiluted at 2-8°C for one month or (in aliquots) at -20°C for longer. Avoid repeated freezing and thawing.
Stability:	Shelf life: one year from despatch.
Gene Name:	fms related tyrosine kinase 1
Database Link:	<a href="#">Entrez Gene 2321 Human P17948</a>



[View online »](#)

**Background:**

VGFR1 encodes a member of the vascular endothelial growth factor receptor (VEGFR) family. VEGFR family members are receptor tyrosine kinases (RTKs) which contain an extracellular ligand-binding region with seven immunoglobulin (Ig)-like domains, a transmembrane segment, and a tyrosine kinase (TK) domain within the cytoplasmic domain. This protein binds to VEGFR-A, VEGFR-B and placental growth factor and plays an important role in angiogenesis and vasculogenesis. Expression of this receptor is found in vascular endothelial cells, placental trophoblast cells and peripheral blood monocytes.

**Synonyms:**

VEGFR1, FLT1, FLT, FRT, VEGF Receptor 1

**Note:**

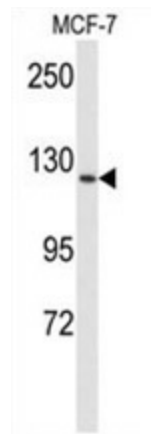
**Molecular Weight:** 150;769 Da

**Protein Families:**

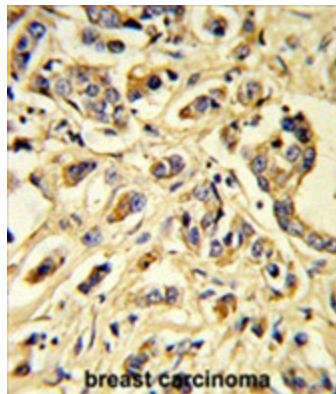
Druggable Genome, Protein Kinase, Secreted Protein

**Protein Pathways:**

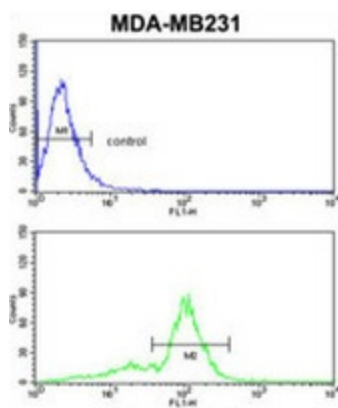
Cytokine-cytokine receptor interaction, Endocytosis, Focal adhesion

**Product images:**

Western blot analysis of VGFR1 Antibody in MCF-7 cell line lysates (35 ug/lane). VGFR1 (arrow) was detected using the purified Pab.



Formalin-fixed and paraffin-embedded human breast carcinoma reacted with VGFR1 Antibody, which was peroxidase-conjugated to the secondary antibody, followed by DAB staining. This data demonstrates the use of this antibody for immunohistochemistry; clinical relevance has not been evaluated.



VGFR1 Antibody flow cytometric analysis of MDA-MB231 cells (bottom histogram) compared to a negative control cell (top histogram) FITC-conjugated goat-anti-rabbit secondary antibodies were used for the analysis.