

## Product datasheet for **AP54499PU-N**

### VAMP3 (Center) Rabbit Polyclonal Antibody

#### Product data:

|                       |  |
|-----------------------|--|
| Product Type:         | Primary Antibodies   |
| Applications:         | WB   |
| Recommended Dilution: | ELISA: 1:1;000.<br>Western blot: 1:100~500.  |
| Reactivity:           | Human, Mouse   |
| Host:                 | Rabbit   |
| Isotype:              | Ig   |
| Clonality:            | Polyclonal   |
| Immunogen:            | KLH conjugated synthetic peptide between 14-43 amino acids from the Central region of human VAMP3                  |
| Specificity:          | This antibody detects VAMP-3 / Synaptobrevin-3 (Center).   |
| Formulation:          | PBS with 0.09% (W/V) sodium azide<br>State: Aff - Purified<br>State: Liquid Ig fraction                            |
| Concentration:        | lot specific   |
| Purification:         | Protein A column followed by peptide affinity purification   |
| Conjugation:          | Unconjugated   |
| Storage:              | Store at 2 - 8 °C for up to six months or (in aliquots) at -20 °C for longer. Avoid repeated freezing and thawing. |
| Stability:            | Shelf life: one year from despatch.  |
| Gene Name:            | vesicle associated membrane protein 3  |
| Database Link:        | <a href="#">Entrez Gene 22319 Mouse</a> <a href="#">Entrez Gene 9341 Human</a><br><a href="#">Q15836</a>           |



[View online »](#)

**Background:** Synaptobrevins/VAMPs, syntaxins, and the 25-kD synaptosomal-associated protein are the main components of a protein complex involved in the docking and/or fusion of synaptic vesicles with the presynaptic membrane. This gene is a member of the vesicle-associated membrane protein (VAMP)/synaptobrevin family. Because of its high homology to other known VAMPs, its broad tissue distribution, and its subcellular localization, the protein encoded by this gene was shown to be the human equivalent of the rodent cellubrevin. In platelets the protein resides on a compartment that is not mobilized to the plasma membrane on calcium or thrombin stimulation.

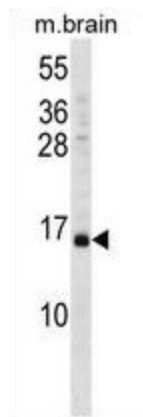
**Synonyms:** VAMP3, Vesicle-associated membrane protein 3, SYB3, Cellubrevin, CEB

**Note:** **Molecular Weight:** 11309 Da

**Protein Families:** Transmembrane

**Protein Pathways:** SNARE interactions in vesicular transport

### Product images:



VAMP3 Antibody (Center) western blot analysis in mouse brain tissue lysates (35 ug/lane). This demonstrates the VAMP3 antibody detected the VAMP3 protein (arrow).