

## Product datasheet for **AP54497PU-N**

### UTY (C-term) Rabbit Polyclonal Antibody

#### Product data:

Product Type:	Primary Antibodies
Applications:	FC, WB
Recommended Dilution:	ELISA: 1:1;000. Western blot: 1:100~500. Flow cytometry: 1:10~50.
Reactivity:	Human
Host:	Rabbit
Isotype:	Ig
Clonality:	Polyclonal
Immunogen:	KLH conjugated synthetic peptide between 1254~1284 amino acids from the C-terminal region of human UTY
Specificity:	This antibody detects UTY (C-term).
Formulation:	PBS with 0.09% (W/V) sodium azide State: Aff - Purified State: Liquid Ig fraction
Concentration:	lot specific
Purification:	Protein A column followed by peptide affinity purification
Conjugation:	Unconjugated
Storage:	Store at 2 - 8 °C for up to six months or (in aliquots) at -20 °C for longer. Avoid repeated freezing and thawing.
Stability:	Shelf life: one year from despatch.
Gene Name:	ubiquitously transcribed tetratricopeptide repeat containing, Y-linked
Database Link:	<a href="#">Entrez Gene 7404 Human</a> <a href="#">Q14607</a>
Background:	UTY encodes a protein containing tetratricopeptide repeats which are thought to be involved in protein-protein interactions. This protein is a minor histocompatibility antigen which may induce graft rejection of male stem cell grafts.
Synonyms:	Histone demethylase UTY

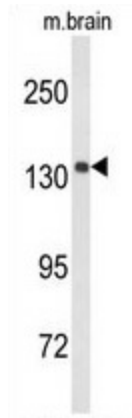


[View online »](#)

**Note:** **Molecular Weight:** 149548 Da

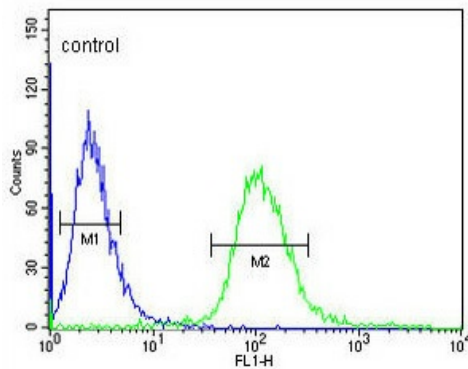
**Protein Families:** Transmembrane

**Product images:**



Western blot analysis of UTY Antibody (C-term) in mouse brain tissue lysates (35 ug/lane). UTY (arrow) was detected using the purified Pab.

**CEM**



UTY Antibody (C-term) flow cytometric analysis of CEM cells (right histogram) compared to a negative control cell (left histogram). FITC-conjugated goat-anti-rabbit secondary antibodies were used for the analysis.