

Product datasheet for **AP54491PU-N**

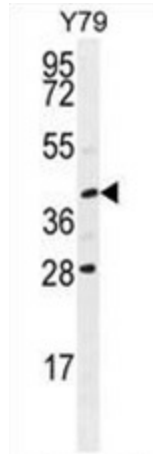
Inactive ubiquitin carboxyl terminal hydrolase 50 (USP50) (Center) Rabbit Polyclonal Antibody

Product data:

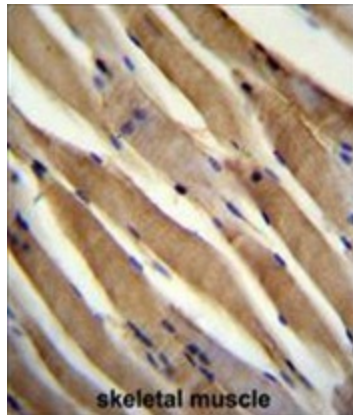
Product Type:	Primary Antibodies
Applications:	IHC, WB
Recommended Dilution:	ELISA: 1:1,000. Western blot: 1:100~500. Immunohistochemistry on paraffin sections: 1:50~100.
Reactivity:	Human
Host:	Rabbit
Isotype:	Ig
Clonality:	Polyclonal
Immunogen:	KLH conjugated synthetic peptide between 148-178 amino acids from the Central region of human USP50
Specificity:	This antibody detects USP50 (Center).
Formulation:	PBS with 0.09% (W/V) sodium azide State: Aff - Purified State: Liquid Ig fraction
Concentration:	lot specific
Purification:	Protein A column followed by peptide affinity purification
Conjugation:	Unconjugated
Storage:	Store at 2 - 8 °C for up to six months or (in aliquots) at -20 °C for longer. Avoid repeated freezing and thawing.
Stability:	Shelf life: one year from despatch.
Gene Name:	ubiquitin specific peptidase 50
Database Link:	Entrez Gene 373509 Human Q70EL3
Synonyms:	Inactive ubiquitin carboxyl-terminal hydrolase 50, Inactive ubiquitin-specific peptidase 50
Note:	Molecular Weight: 38955 Da



[View online »](#)

Product images:

USP50 Antibody (Center) western blot analysis in Y79 cell line lysates (35 ug/lane). This demonstrates the USP50 antibody detected the USP50 protein (arrow).



USP50 Antibody (Center) immunohistochemistry analysis in formalin fixed and paraffin embedded human skeletal muscle followed by peroxidase conjugation of the secondary antibody and DAB staining. This data demonstrates the use of USP50 Antibody (Center) for immunohistochemistry. Clinical relevance has not been evaluated.