

Product datasheet for **AP54489PU-N**

USP30 (N-term) Rabbit Polyclonal Antibody

Product data:

Product Type:	Primary Antibodies
Applications:	WB
Recommended Dilution:	ELISA: 1:1;000. Western blot: :100~500.
Reactivity:	Human
Host:	Rabbit
Isotype:	Ig
Clonality:	Polyclonal
Immunogen:	KLH conjugated synthetic peptide between 155-185 amino acids from the N-terminal region of human USP30
Specificity:	This antibody detects USP30 (N-term).
Formulation:	PBS with 0.09% (W/V) sodium azide State: Aff - Purified State: Liquid Ig fraction
Concentration:	lot specific
Purification:	Protein A column followed by peptide affinity purification
Conjugation:	Unconjugated
Storage:	Store at 2 - 8 °C for up to six months or (in aliquots) at -20 °C for longer. Avoid repeated freezing and thawing.
Stability:	Shelf life: one year from despatch.
Gene Name:	ubiquitin specific peptidase 30
Database Link:	Entrez Gene 84749 Human Q70CQ3
Background:	USP30, a member of the ubiquitin-specific protease family (see USP1, MIM 603478), is a novel mitochondrial deubiquitinating (DUB) enzyme (Nakamura and Hirose, 2008 [PubMed 18287522]).
Synonyms:	Ubiquitin carboxyl-terminal hydrolase 30

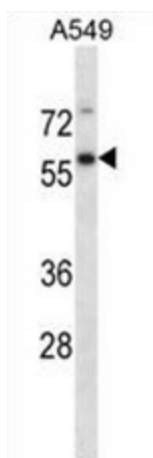


[View online »](#)

Note: **Molecular Weight:** 58503 Da

Protein Families: Protease, Transmembrane

Product images:



USP30 Antibody (N-term) western blot analysis in A549 cell line lysates (35 ug/lane). This demonstrates the USP30 antibody detected the USP30 protein (arrow).