

Product datasheet for **AP54486PU-N**

USP12 (Center) Rabbit Polyclonal Antibody

Product data:

Product Type:	Primary Antibodies
Applications:	WB
Recommended Dilution:	Peptide ELISA: 1/1000. Western blot: 1/1000.
Reactivity:	Human, Mouse
Host:	Rabbit
Isotype:	Ig
Clonality:	Polyclonal
Immunogen:	KLH conjugated synthetic peptide between 222-251 amino acids from the Central region of human USP12
Specificity:	This antibody detects USP12 (Center).
Formulation:	PBS State: Aff - Purified State: Liquid purified Ig fraction Preservative: 0.09% (W/V) Sodium Azide
Concentration:	lot specific
Purification:	Protein A column followed by peptide affinity purification
Conjugation:	Unconjugated
Storage:	Store undiluted at 2-8°C for one month or (in aliquots) at -20°C for longer. Avoid repeated freezing and thawing.
Stability:	Shelf life: one year from despatch.
Gene Name:	ubiquitin specific peptidase 12
Database Link:	Entrez Gene 22217 Mouse Entrez Gene 219333 Human O75317
Background:	USP12 is a deubiquitinating enzyme. Has almost no deubiquitinating activity by itself and requires the interaction with WDR48 to have a high activity. Not involved in deubiquitination of monoubiquitinated FANCD2.
Synonyms:	Ubiquitin carboxyl-terminal hydrolase 12, UBH1, USP12L1

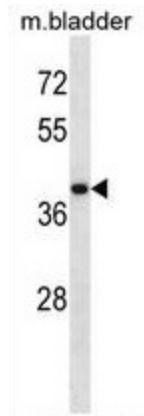


[View online »](#)

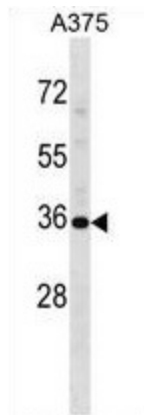
Note: **Molecular Weight:** 42858 Da

Protein Families: Druggable Genome, Protease

Product images:



USP12 Antibody (Center) western blot analysis in mouse bladder tissue lysates (35 ug/lane). This demonstrates the USP12 antibody detected the USP12 protein (arrow).



USP12 Antibody (Center) western blot analysis in A375 cell line lysates (35 ug/lane). This demonstrates the USP12 antibody detected the USP12 protein (arrow).