

## Product datasheet for **AP54481PU-N**

### UQCRFS1 (C-term) Rabbit Polyclonal Antibody

#### Product data:

Product Type:	Primary Antibodies
Applications:	FC, IF, IHC, WB
Recommended Dilution:	ELISA: 1:1;000. Western blot: 1:100~500. Immunohistochemistry on paraffin sections: 1:10~50. Flow cytometry: 1:10~50. Immunofluorescence: 1:10~50.
Reactivity:	Human
Host:	Rabbit
Isotype:	Ig
Clonality:	Polyclonal
Immunogen:	KLH conjugated synthetic peptide between 188-217 amino acids from the C-terminal region of human UQCRFS1
Specificity:	This antibody detects UQCRFS1 (Complex III subunit Rieske) (C-term).
Formulation:	PBS with 0.09% (W/V) sodium azide State: Aff - Purified State: Liquid Ig fraction
Concentration:	lot specific
Purification:	Protein A column followed by peptide affinity purification
Conjugation:	Unconjugated
Storage:	Store at 2 - 8 °C for up to six months or (in aliquots) at -20 °C for longer. Avoid repeated freezing and thawing.
Stability:	Shelf life: one year from despatch.
Gene Name:	ubiquinol-cytochrome c reductase, Rieske iron-sulfur polypeptide 1
Database Link:	<a href="#">Entrez Gene 7386 Human P47985</a>



[View online »](#)

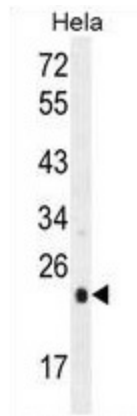
**Background:** Component of the ubiquinol-cytochrome c reductase complex (complex III or cytochrome b-c1 complex), which is a respiratory chain that generates an electrochemical potential coupled to ATP synthesis. The transit peptide of the Rieske protein seems to form part of the bc1 complex and is considered to be the subunit 11/IX of that complex (By similarity).

**Synonyms:** Rieske iron-sulfur protein, Complex III subunit 5

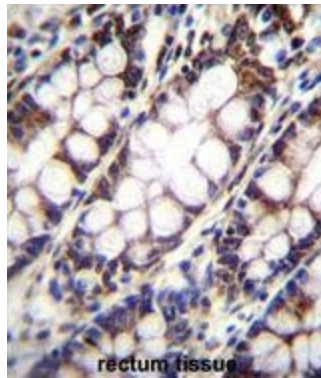
**Note:** **Molecular Weight:** 29668 Da

**Protein Pathways:** Alzheimer's disease, Cardiac muscle contraction, Huntington's disease, Metabolic pathways, Oxidative phosphorylation, Parkinson's disease

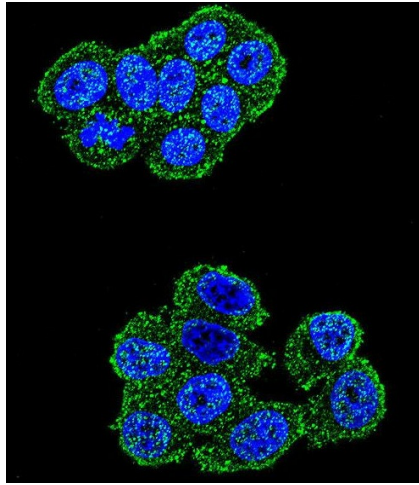
### Product images:



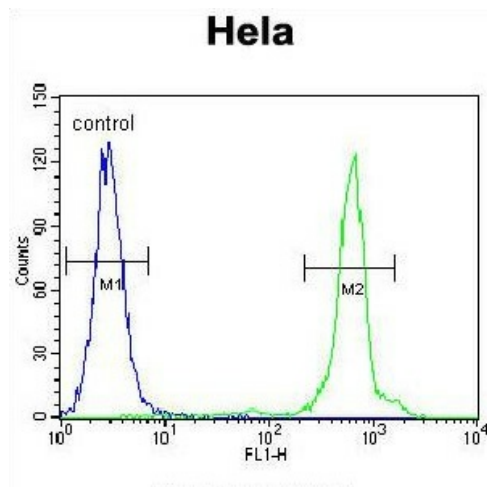
UQCRFS1 Antibody (C-term) western blot analysis in HeLa cell line lysates (35 ug/lane). This demonstrates the UQCRFS1 antibody detected the UQCRFS1 protein (arrow).



UQCRFS1 Antibody (C-term) immunohistochemistry analysis in formalin fixed and paraffin embedded human rectum tissue followed by peroxidase conjugation of the secondary antibody and DAB staining. This data demonstrates the use of UQCRFS1 Antibody (C-term) for immunohistochemistry. Clinical relevance has not been evaluated.



Confocal immunofluorescent analysis of UQCRRS1 Antibody (C-term) with HeLa cell followed by Alexa Fluor 488-conjugated goat anti-rabbit IgG (green). DAPI was used to stain the cell nuclear (blue).



UQCRRS1 Antibody (C-term) flow cytometric analysis of HeLa cells (right histogram) compared to a negative control cell (left histogram). FITC-conjugated goat-anti-rabbit secondary antibodies were used for the analysis.