

Product datasheet for **AP54467PU-N**

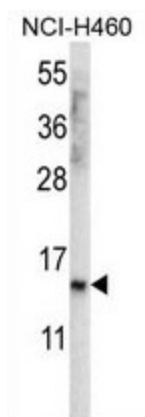
UNQ3029 (Center) Rabbit Polyclonal Antibody

Product data:

Product Type:	Primary Antibodies
Applications:	WB
Recommended Dilution:	ELISA: 1:1;000. Western blot: 1:100~500.
Reactivity:	Human
Host:	Rabbit
Isotype:	Ig
Clonality:	Polyclonal
Immunogen:	KLH conjugated synthetic peptide between 61-91 amino acids from the Central region of human UNQ3029
Specificity:	This antibody detects UNQ3029 (Center).
Formulation:	PBS with 0.09% (W/V) sodium azide State: Aff - Purified State: Liquid Ig fraction
Concentration:	lot specific
Purification:	Protein A column followed by peptide affinity purification
Conjugation:	Unconjugated
Storage:	Store at 2 - 8 °C for up to six months or (in aliquots) at -20 °C for longer. Avoid repeated freezing and thawing.
Stability:	Shelf life: one year from despatch.
Database Link:	Q6UWF6
Synonyms:	Putative uncharacterized protein /PRO9830
Note:	Molecular Weight: 12799 Da



[View online »](#)

Product images:

UNQ3029 Antibody (Center) (AP54467PU-N) western blot analysis in NCI-H460 cell line lysates (35 g/lane). This demonstrates the UNQ3029 antibody detected the UNQ3029 protein (arrow).