

Product datasheet for **AP54458PU-N**

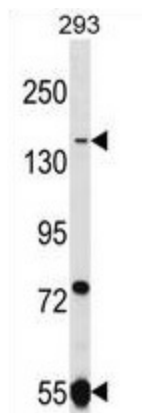
KIAA0701 (UHRF1BP1L) (Center) Rabbit Polyclonal Antibody

Product data:

Product Type:	Primary Antibodies
Applications:	WB
Recommended Dilution:	ELISA: 1/1000. Western Blot: 1:/100-1/500.
Reactivity:	Human
Host:	Rabbit
Isotype:	Ig
Clonality:	Polyclonal
Immunogen:	KLH conjugated synthetic peptide between 543-572 amino acids from the Central region of human UHRF1BP1L
Specificity:	This antibody detects UHRF1BP1L (Center).
Formulation:	PBS containing 0.09% (W/V) Sodium Azide as preservative State: Aff - Purified State: Liquid purified Ig fraction
Concentration:	lot specific
Purification:	Protein A column, followed by peptide affinity purification
Conjugation:	Unconjugated
Storage:	Store undiluted at 2-8°C for one month or (in aliquots) at -20°C for longer. Avoid repeated freezing and thawing.
Stability:	Shelf life: one year from despatch.
Gene Name:	UHRF1 binding protein 1 like
Database Link:	Entrez Gene 23074 Human A0JNW5
Synonyms:	UHRF1-binding protein 1-like, KIAA0701
Note:	Molecular Weight: 59kd Isoform 2. 164199 Da



[View online »](#)

Product images:

UHRF1BP1L Antibody (Center) western blot analysis in 293 cell line lysates (35 ug/lane). This demonstrates the UHRF1BP1L antibody detected the UHRF1BP1L protein (arrow).