

Product datasheet for **AP54455PU-N**

UGT2B15 (Center) Rabbit Polyclonal Antibody

Product data:

Product Type:	Primary Antibodies
Applications:	IF, IHC, WB
Recommended Dilution:	ELISA: 1:1;000 Western blot: 1:100~500. Immunohistochemistry on paraffin sections: 1:10~50. Immunofluorescence: 1:10~50.
Reactivity:	Human
Host:	Rabbit
Isotype:	Ig
Clonality:	Polyclonal
Immunogen:	KLH conjugated synthetic peptide between 163-193 amino acids from the Central region of human UGT2B15
Specificity:	This antibody detects UGT2B15 / UGT2B8 (Center).
Formulation:	PBS with 0.09% (W/V) sodium azide State: Aff - Purified State: Liquid Ig fraction
Concentration:	lot specific
Purification:	Protein A column followed by peptide affinity purification
Conjugation:	Unconjugated
Storage:	Store at 2 - 8 °C for up to six months or (in aliquots) at -20 °C for longer. Avoid repeated freezing and thawing.
Stability:	Shelf life: one year from despatch.
Gene Name:	UDP glucuronosyltransferase family 2 member B15
Database Link:	Entrez Gene 7366 Human P54855
Background:	The UGTs are of major importance in the conjugation and subsequent elimination of potentially toxic xenobiotics and endogenous compounds. UGT2B8 demonstrates reactivity with estriol. See UGT2B4 (MIM 600067).



[View online »](#)

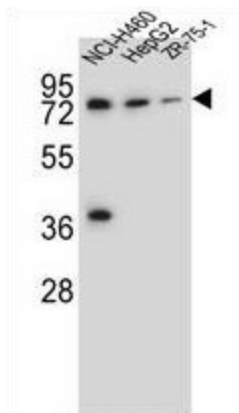
Synonyms: UDP-glucuronosyltransferase 2B15, UDPGT 2B15, UDPGTh-3, HLUG4

Note: **Molecular Weight:** 60988 Da

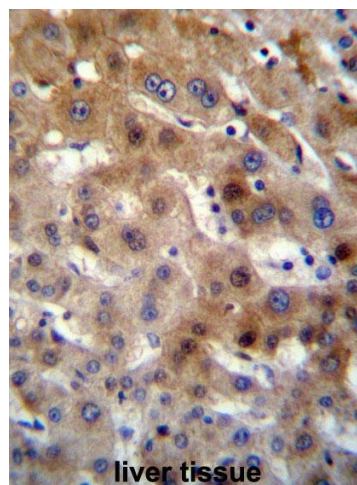
Protein Families: Transmembrane

Protein Pathways: Androgen and estrogen metabolism, Ascorbate and aldarate metabolism, Drug metabolism - cytochrome P450, Drug metabolism - other enzymes, Metabolic pathways, Metabolism of xenobiotics by cytochrome P450, Pentose and glucuronate interconversions, Porphyrin and chlorophyll metabolism, Retinol metabolism, Starch and sucrose metabolism

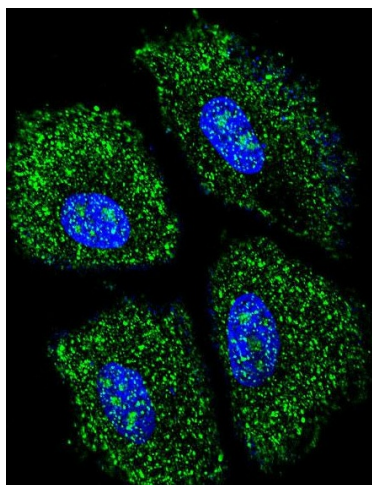
Product images:



UGT2B15 Antibody (Center) western blot analysis in NCI-H460, HepG2, ZR-75-1 cell line lysates (35 ug/lane). This demonstrates the UGT2B15 antibody detected the UGT2B15 protein (arrow).



UGT2B15 Antibody (Center) immunohistochemistry analysis in formalin fixed and paraffin embedded human liver tissue followed by peroxidase conjugation of the secondary antibody and DAB staining. This data demonstrates the use of UGT2B15 Antibody (Center) for immunohistochemistry. Clinical relevance has not been evaluated.



Confocal immunofluorescent analysis of UGT2B15 Antibody (Center) with NCI-H460 cell followed by Alexa Fluor 488-conjugated goat anti-rabbit IgG (green). DAPI was used to stain the cell nuclear (blue).