

Product datasheet for **AP54445PU-N**

UBE4A (Center) Rabbit Polyclonal Antibody

Product data:

Product Type:	Primary Antibodies
Applications:	WB
Recommended Dilution:	ELISA: 1;000. Western blot: 1:100~500.
Reactivity:	Human
Host:	Rabbit
Isotype:	Ig
Clonality:	Polyclonal
Immunogen:	KLH conjugated synthetic peptide between 457-486 amino acids from the Central region of human UBE4A
Specificity:	This antibody detects UBE4A (Center).
Formulation:	PBS with 0.09% (W/V) sodium azide State: Aff - Purified State: Liquid Ig fraction
Concentration:	lot specific
Purification:	Potein A column followed by peptide affinity purification
Conjugation:	Unconjugated
Storage:	Store at 2 - 8 °C for up to six months or (in aliquots) at -20 °C for longer. Avoid repeated freezing and thawing.
Stability:	Shelf life: one year from despatch.
Gene Name:	ubiquitination factor E4A
Database Link:	Entrez Gene 9354 Human Q14139
Background:	The modification of proteins with ubiquitin is an important cellular mechanism for targeting abnormal or short-lived proteins for degradation. Ubiquitination involves at least three classes of enzymes: ubiquitin-activating enzymes, or E1s, ubiquitin-conjugating enzymes, or E2s, and ubiquitin-protein ligases, or E3s. This gene encodes an additional conjugation factor, E4, which is involved in multiubiquitin chain assembly.



[View online »](#)

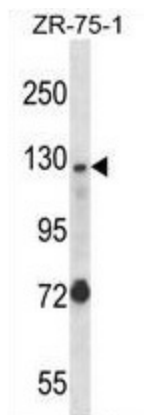
Synonyms: Ubiquitin conjugation factor E4 A, KIAA0126

Note: **Molecular Weight:** 122561 Da

Protein Families: Druggable Genome

Protein Pathways: Ubiquitin mediated proteolysis

Product images:



UBE4A Antibody (Center) western blot analysis in ZR-75-1 cell line lysates (35 ug/lane). This demonstrates the UBE4A antibody detected the UBE4A protein (arrow).