

Product datasheet for **AP54443PU-N**

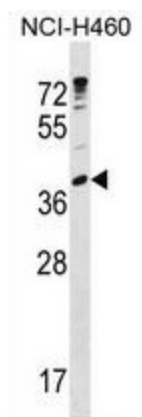
UBE2U (N-term) Rabbit Polyclonal Antibody

Product data:

Product Type:	Primary Antibodies
Applications:	WB
Recommended Dilution:	ELISA: 1:1;000. Western blot: 1:100~500.
Reactivity:	Human
Host:	Rabbit
Isotype:	Ig
Clonality:	Polyclonal
Immunogen:	KLH conjugated synthetic peptide between 1-30 amino acids from the N-terminal region of human UBE2U
Specificity:	This antibody detects UBE2U (N-term).
Formulation:	PBS with 0.09% (W/V) sodium azide State: Aff - Purified State: Liquid Ig fraction
Concentration:	lot specific
Purification:	Protein A column followed by peptide affinity purification
Conjugation:	Unconjugated
Storage:	Store at 2 - 8 °C for up to six months or (in aliquots) at -20 °C for longer. Avoid repeated freezing and thawing.
Stability:	Shelf life: one year from despatch.
Gene Name:	ubiquitin conjugating enzyme E2 U (putative)
Database Link:	Entrez Gene 148581 Human Q5VWX9
Background:	UBE2U catalyzes the covalent attachment of ubiquitin to other proteins (By similarity).
Synonyms:	Ubiquitin-conjugating enzyme E2 U, Ubiquitin-protein ligase U, Ubiquitin carrier protein U
Note:	Molecular Weight: 37741 Da
Protein Pathways:	Ubiquitin mediated proteolysis



[View online »](#)

Product images:

UBE2U Antibody (N-term) western blot analysis in NCI-H460 cell line lysates (35 ug/lane). This demonstrates the UBE2U antibody detected the UBE2U protein (arrow).