

Product datasheet for **AP54442PU-N**

UBE2Q2 (Center) Rabbit Polyclonal Antibody

Product data:

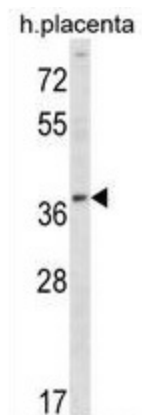
Product Type:	Primary Antibodies
Applications:	WB
Recommended Dilution:	ELISA: 1:1;000. Western blot: 1:100~500.
Reactivity:	Human
Host:	Rabbit
Isotype:	Ig
Clonality:	Polyclonal
Immunogen:	KLH conjugated synthetic peptide between 167-196 amino acids from the Central region of human UBE2Q2
Specificity:	This antibody detects UBE2Q2 (Center).
Formulation:	PBS with 0.09% (W/V) sodium azide State: Aff - Purified State: Liquid Ig fraction
Concentration:	lot specific
Purification:	Protein A column followed by peptide affinity purification
Conjugation:	Unconjugated
Storage:	Store at 2 - 8 °C for up to six months or (in aliquots) at -20 °C for longer. Avoid repeated freezing and thawing.
Stability:	Shelf life: one year from despatch.
Gene Name:	ubiquitin conjugating enzyme E2 Q2
Database Link:	Entrez Gene 92912 Human Q8WVN8
Background:	UBE2Q2 accepts ubiquitin from the E1 complex and catalyzes its covalent attachment to other proteins. In vitro catalyzes 'Lys-48'-linked polyubiquitination.
Synonyms:	Ubiquitin-conjugating enzyme E2 Q2, Ubiquitin-protein ligase Q2, Ubiquitin carrier protein Q2
Note:	Molecular Weight: 42818 Da



[View online »](#)

Protein Pathways: Ubiquitin mediated proteolysis

Product images:



UBE2Q2 Antibody (Center) western blot analysis in human placenta tissue lysates (35 ug/lane). This demonstrates the UBE2Q2 antibody detected the UBE2Q2 protein (arrow).