

## Product datasheet for **AP54441PU-N**

### UBE2NL (N-term) Rabbit Polyclonal Antibody

#### Product data:

|                       |   |
|-----------------------|---|
| Product Type:         | Primary Antibodies  |
| Applications:         | IHC, WB   |
| Recommended Dilution: | ELISA: 1:1;000.<br>Western blot: 1:100~500.<br>Immunohistochemistry: 1:10~50.   |
| Reactivity:           | Human   |
| Host:                 | Rabbit  |
| Isotype:              | Ig  |
| Clonality:            | Polyclonal  |
| Immunogen:            | KLH conjugated synthetic peptide between 5-34 amino acids from the N-terminal region of human UBE2NL  |
| Specificity:          | This antibody detects UBE2NL (N-term).  |
| Formulation:          | PBS with 0.09% (W/V) sodium azide<br>State: Aff - Purified<br>State: Liquid Ig fraction   |
| Concentration:        | lot specific  |
| Purification:         | Protein A column followed by peptide affinity purification  |
| Conjugation:          | Unconjugated  |
| Storage:              | Store at 2 - 8 °C for up to six months or (in aliquots) at -20 °C for longer. Avoid repeated freezing and thawing.  |
| Stability:            | Shelf life: one year from despatch.   |
| Gene Name:            | ubiquitin conjugating enzyme E2 N like (gene/pseudogene)  |
| Database Link:        | <a href="#">Entrez Gene 389898 Human Q5JXB2</a>   |
| Background:           | This gene is intronless and encodes a member of the ubiquitin-conjugating enzyme family. The protein product is 91% identical to ubiquitin-conjugating enzyme E2N, a multi-exon gene product. |
| Synonyms:             | Putative ubiquitin-conjugating enzyme E2 N-like   |

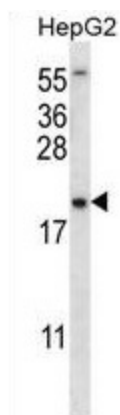


[View online »](#)

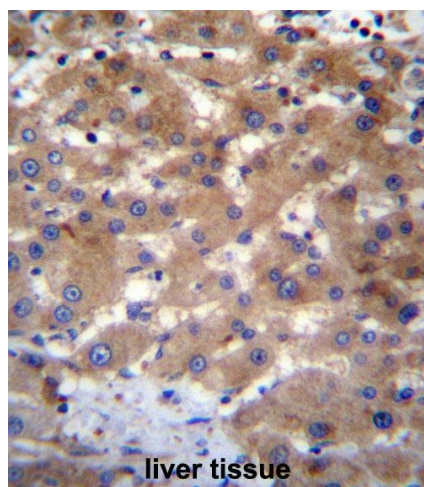
Note: **Molecular Weight:** 17377 Da

Protein Pathways: Ubiquitin mediated proteolysis

### Product images:



UBE2NL Antibody (N-term) western blot analysis in HepG2 cell line lysates (35 ug/lane). This demonstrates the UBE2NL antibody detected the UBE2NL protein (arrow).



UBE2NL Antibody (N-term) immunohistochemistry analysis in formalin fixed and paraffin embedded human liver tissue followed by peroxidase conjugation of the secondary antibody and DAB staining. This data demonstrates the use of UBE2NL Antibody (N-term) for immunohistochemistry. Clinical relevance has not been evaluated.