

Product datasheet for **AP54438PU-N**

UBE2D3 (C-term) Rabbit Polyclonal Antibody

Product data:

Product Type:	Primary Antibodies
Applications:	WB
Recommended Dilution:	ELISA: 1:1;000. Western blot: 1:100~500.
Reactivity:	Human
Host:	Rabbit
Isotype:	Ig
Clonality:	Polyclonal
Immunogen:	KLH conjugated synthetic peptide between 108-136 amino acids from the C-terminal region of human UBE2D3
Specificity:	This antibody detects UBE2D3 (C-term).
Formulation:	PBS with 0.09% (W/V) sodium azide State: Aff - Purified State: Liquid Ig fraction
Concentration:	lot specific
Purification:	Protein A column followed by peptide affinity purification
Conjugation:	Unconjugated
Storage:	Store at 2 - 8 °C for up to six months or (in aliquots) at -20 °C for longer. Avoid repeated freezing and thawing.
Stability:	Shelf life: one year from despatch.
Gene Name:	ubiquitin conjugating enzyme E2 D3
Database Link:	Entrez Gene 7323 Human P61077



[View online »](#)

Background:

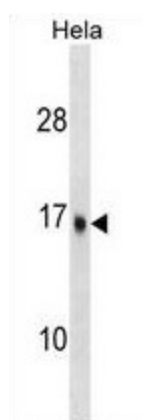
The modification of proteins with ubiquitin is an important cellular mechanism for targeting abnormal or short-lived proteins for degradation. Ubiquitination involves at least three classes of enzymes: ubiquitin-activating enzymes, or E1s, ubiquitin-conjugating enzymes, or E2s, and ubiquitin-protein ligases, or E3s. This gene encodes a member of the E2 ubiquitin-conjugating enzyme family. This enzyme functions in the ubiquitination of the tumor-suppressor protein p53, which is induced by an E3 ubiquitin-protein ligase. Multiple spliced transcript variants have been found for this gene, but the full-length nature of some variants has not been determined.

Synonyms:

UBC5C, UBCH5C

Note:**Molecular Weight:** 16687 Da**Protein Pathways:**

Ubiquitin mediated proteolysis

Product images:

UBE2D3 Antibody (C-term) western blot analysis in HeLa cell line lysates (35 ug/lane). This demonstrates the UBE2D3 antibody detected the UBE2D3 protein (arrow).