

Product datasheet for **AP54426PU-N**

TXNL2 (GLRX3) (N-term) Rabbit Polyclonal Antibody

Product data:

Product Type:	Primary Antibodies
Applications:	WB
Recommended Dilution:	ELISA: 1:1;000. Western blot: 1:100~500.
Reactivity:	Human, Mouse
Host:	Rabbit
Isotype:	Ig
Clonality:	Polyclonal
Immunogen:	KLH conjugated synthetic peptide between 88-118 amino acids from the N-terminal region of human TXNL2
Specificity:	This antibody detects Glutaredoxin-3 / GLRX3 (N-term).
Formulation:	PBS with 0.09% (W/V) sodium azide State: Aff - Purified State: Liquid Ig fraction
Concentration:	lot specific
Purification:	Protein A column followed by peptide affinity purification
Conjugation:	Unconjugated
Storage:	Store at 2 - 8 °C for up to six months or (in aliquots) at -20 °C for longer. Avoid repeated freezing and thawing.
Stability:	Shelf life: one year from despatch.
Gene Name:	glutaredoxin 3
Database Link:	Entrez Gene 10539 Human O76003
Background:	GLRX3 is a critical negative regulator of cardiac hypertrophy and a positive inotropic regulator (By similarity). May play a role in regulating the function of the thioredoxin system. Does not possess any thioredoxin activity since it lacks the conserved motif that is essential for catalytic activity.
Synonyms:	Thioredoxin-like protein 2, TXNL2, GRX3, PICOT, HUSSY-22

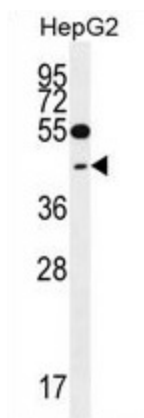


[View online »](#)

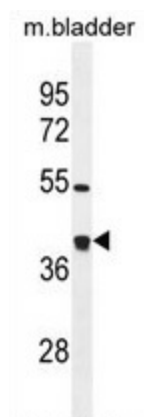
Note: **Molecular Weight:** 37432 Da

Protein Families: Druggable Genome

Product images:



TXNL2 Antibody (N-term) western blot analysis in HepG2 cell line lysates (35 ug/lane). This demonstrates the TXNL2 antibody detected the TXNL2 protein (arrow).



TXNL2 Antibody (N-term) western blot analysis in mouse bladder tissue lysates (35 ug/lane). This demonstrates the TXNL2 antibody detected the TXNL2 protein (arrow).