

## Product datasheet for **AP54422PU-N**

### TUFM (C-term) Rabbit Polyclonal Antibody

#### Product data:

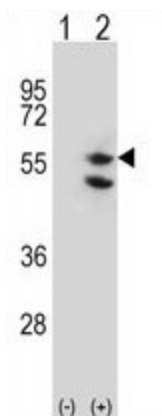
Product Type:	Primary Antibodies
Applications:	WB
Recommended Dilution:	ELISA: 1:1;000. Western blot: 1:100~500.
Reactivity:	Human
Host:	Rabbit
Isotype:	Ig
Clonality:	Polyclonal
Immunogen:	KLH conjugated synthetic peptide between 341-370 amino acids from the C-terminal region of human TUFM
Specificity:	This antibody detects TUFM (C-term).
Formulation:	PBS with 0.09% (W/V) sodium azide State: Aff - Purified State: Liquid Ig fraction
Concentration:	lot specific
Purification:	Protein A column followed by peptide affinity purification
Conjugation:	Unconjugated
Storage:	Store at 2 - 8 °C for up to six months or (in aliquots) at -20 °C for longer. Avoid repeated freezing and thawing.
Stability:	Shelf life: one year from despatch.
Gene Name:	Tu translation elongation factor, mitochondrial
Database Link:	<a href="#">Entrez Gene 7284 Human P49411</a>
Background:	This gene encodes a protein which participates in protein translation in mitochondria. Mutations in this gene have been associated with combined oxidative phosphorylation deficiency resulting in lactic acidosis and fatal encephalopathy. A pseudogene has been identified on chromosome 17.
Synonyms:	EF-Tu, Elongation factor Tu mitochondrial



[View online »](#)

Note: **Molecular Weight:** 49542 Da

### Product images:



Western blot analysis of TUFM (arrow) using rabbit polyclonal TUFM Antibody (C-term). 293 cell lysates (2 ug/lane) either nontransfected (Lane 1) or transiently transfected (Lane 2) with the TUFM gene.