

Product datasheet for **AP54421PU-N**

Gamma tubulin complex component 3 (TUBGCP3) (C-term) Rabbit Polyclonal Antibody

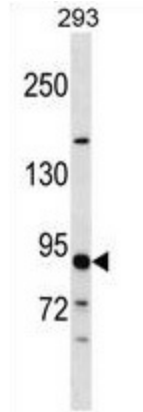
Product data:

Product Type:	Primary Antibodies
Applications:	WB
Recommended Dilution:	ELISA: 1:1;000. Western blot: 1:100~500.
Reactivity:	Human
Host:	Rabbit
Isotype:	Ig
Clonality:	Polyclonal
Immunogen:	KLH conjugated synthetic peptide between 786-816 amino acids from the C-terminal region of human TUBGCP3
Specificity:	This antibody detects TUBGCP3 (C-term).
Formulation:	PBS with 0.09% (W/V) sodium azide State: Aff - Purified State: Liquid Ig fraction
Concentration:	lot specific
Purification:	Protein A column followed by peptide affinity purification
Conjugation:	Unconjugated
Storage:	Store at 2 - 8 °C for up to six months or (in aliquots) at -20 °C for longer. Avoid repeated freezing and thawing.
Stability:	Shelf life: one year from despatch.
Gene Name:	tubulin gamma complex associated protein 3
Database Link:	Entrez Gene 10426 Human Q96CW5
Background:	Gamma-tubulin complex is necessary for microtubule nucleation at the centrosome.
Synonyms:	GCP-3, GCP3, Spc98, Grip104
Note:	Molecular Weight: 103571 Da
Protein Families:	Druggable Genome



[View online »](#)

Product images:



TUBGCP3 Antibody (C-term) western blot analysis in 293 cell line lysates (35 ug/lane). This demonstrates the TUBGCP3 antibody detected the TUBGCP3 protein (arrow).