

## Product datasheet for **AP54420PU-N**

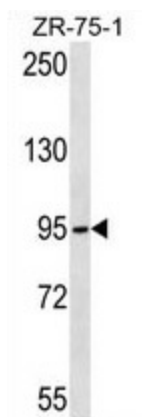
### TUBGCP2 (Center) Rabbit Polyclonal Antibody

#### Product data:

Product Type:	Primary Antibodies
Applications:	WB
Recommended Dilution:	ELISA: 1:1;000. Western blot: 1:100~500.
Reactivity:	Human
Host:	Rabbit
Isotype:	Ig
Clonality:	Polyclonal
Immunogen:	KLH conjugated synthetic peptide between 401-431 amino acids from the Central region of human TUBGCP2
Specificity:	This antibody detects TUBGCP2 (Center).
Formulation:	PBS with 0.09% (W/V) sodium azide State: Aff - Purified State: Liquid Ig fraction
Concentration:	lot specific
Purification:	Protein A column followed by peptide affinity purification
Conjugation:	Unconjugated
Storage:	Store at 2 - 8 °C for up to six months or (in aliquots) at -20 °C for longer. Avoid repeated freezing and thawing.
Stability:	Shelf life: one year from despatch.
Gene Name:	tubulin gamma complex associated protein 2
Database Link:	<a href="#">Entrez Gene 10844 Human Q9BSJ2</a>
Background:	Gamma-tubulin complex is necessary for microtubule nucleation at the centrosome.
Synonyms:	GCP-2, GCP2, Spc97, Grip103
Note:	<b>Molecular Weight:</b> 102534 Da
Protein Families:	Druggable Genome



[View online »](#)

**Product images:**

TUBGCP2 Antibody (Center) western blot analysis in ZR-75-1 cell line lysates (35 ug/lane). This demonstrates the TUBGCP2 antibody detected the TUBGCP2 protein (arrow).